



National Gazette

PUBLISHED BY AUTHORITY

(Registered at the General Post Office, Port Moresby, for transmission by post as a Qualified Publication)

No. G254]

PORT MORESBY, FRIDAY, 9th SEPTEMBER

[2011

Land Act 1996

APPROVAL OF APPLICATION FOR SUBDIVISION UNDER SECTION 130 OF THE LAND ACT 1996 AS AMENDED

I, Hon. Lucas Dekena, M.P., Minister for Lands and Physical Planning, being satisfied as to my powers under Section 130 of the *Land Act 1996* to approve applications for subdivisions by state lease holders and all other powers me enabling hereby grant approval of the application of Hornibrook NGI Limited for the subdivision of its existing lease under State Lease Volume 5 Folio 208, Portion 546, Section/Milinch of Lae, Allotment/Fourmil of Markham, Morobe Province, having an area of 9.42 hectares or more into three new individual subdivided state leases as described in the Schedule hereunder –

- (1) The Leases shall be used bona fide for the purpose specified in the Schedule.
- (2) The Leases shall be for the respective terms specified in Schedule commencing from the date when the land was originally granted under the former state lease;
- (3) The Leases shall attract appropriate rents as specified in the Schedule.
- (4) Provision for any necessary easements for electricity, water, drainage and sewerage reticulation shall issue as seen proper or determined from time to time.

SCHEDULE

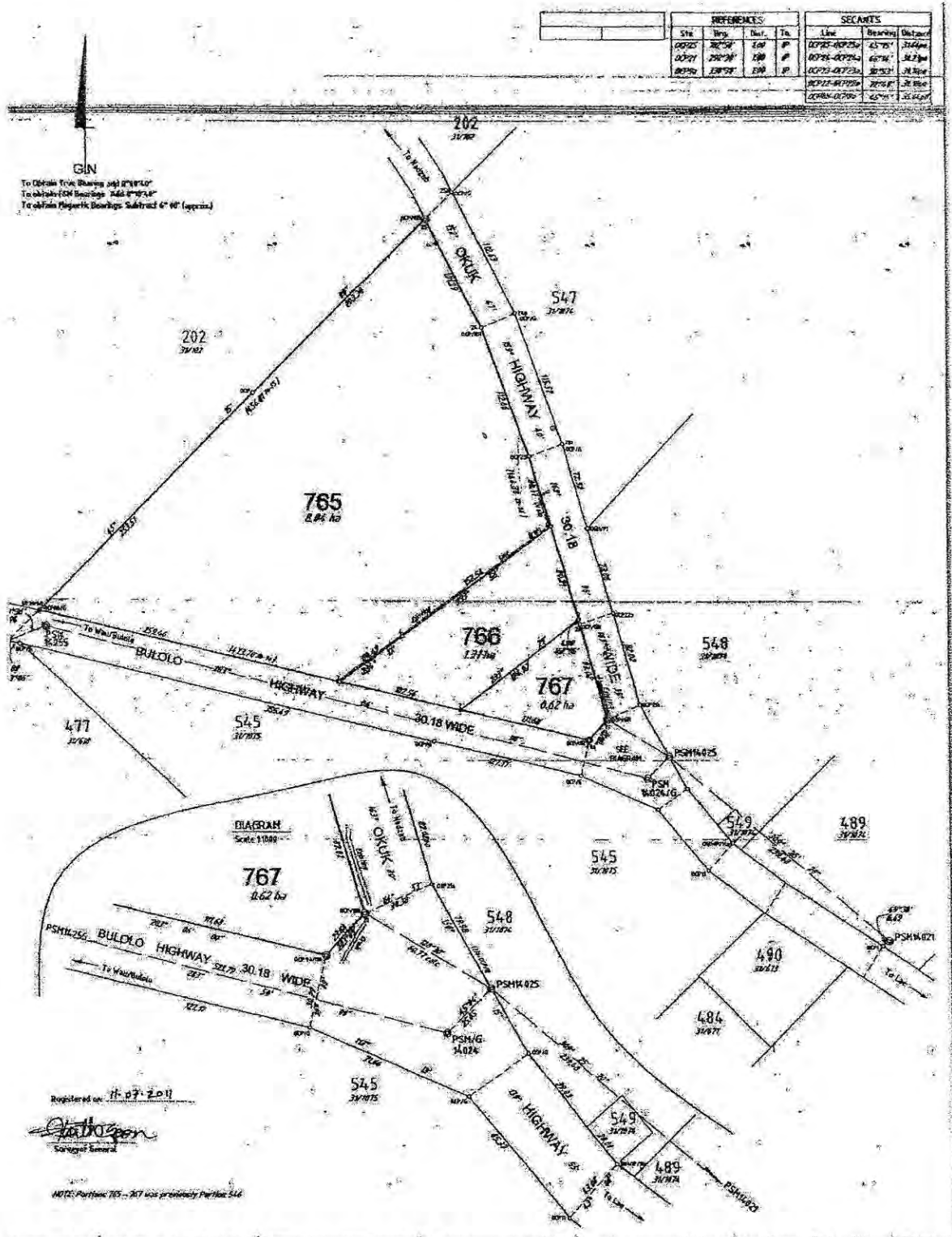
A Residential and Business Lease for a period of 99 years over all that piece of land known as Portion 765, Milinch Lae, Fourmil Markham, Morobe Province having an area of 8.04 hectares as shown as survey plan Catalogue No. S/31/1498, and the drain reserve or such other reserve therein is hereby extinguished, however all other covenants and conditions in respect to rent and improvements shall apply unless determined otherwise.

A Residential and Business Lease for a period of 99 years over all that piece of land known as Portion 766, Milinch Lae, Fourmil Markham, Morobe Province having an area of 1.31 hectares as shown as survey plan Catalogue No. S/31/1498 and the drain reserve or such other reserve therein is hereby extinguished, however all other covenants and conditions in respect to rent and improvements shall apply unless determined otherwise.

A Residential and Business Lease for a period of 99 years over all that piece of land known as Portion 765, Milinch Lae, Fourmil Markham, Morobe Province having an area of 0.62 hectares as shown as survey plan Catalogue No. S/31/1498 and the drain reserve or such other reserve therein is hereby extinguished, however all other covenants and conditions in respect to rent and improvements shall apply unless determined otherwise.

Dated this 18th day of August, 2011.

Hon. L. DEKENA, M.P.,
Minister for Lands & Physical Planning.



Scale 1:1000		Original Plan No.	27890
No.	2009/01	Locality, Map Grid and Date	11/07/2011
By	Paul Henry	Highway Section	11/07/2011
Drawn by	John O'Connell	Urban Agency	PSH1425, PSH1426, PSH1427, PSH1428, PSH1429, PSH1430, PSH1431, PSH1432, PSH1433, PSH1434, PSH1435, PSH1436, PSH1437, PSH1438, PSH1439, PSH1440, PSH1441, PSH1442, PSH1443, PSH1444, PSH1445, PSH1446, PSH1447, PSH1448, PSH1449, PSH1450, PSH1451, PSH1452, PSH1453, PSH1454, PSH1455, PSH1456, PSH1457, PSH1458, PSH1459, PSH1460, PSH1461, PSH1462, PSH1463, PSH1464, PSH1465, PSH1466, PSH1467, PSH1468, PSH1469, PSH1470, PSH1471, PSH1472, PSH1473, PSH1474, PSH1475, PSH1476, PSH1477, PSH1478, PSH1479, PSH1480, PSH1481, PSH1482, PSH1483, PSH1484, PSH1485, PSH1486, PSH1487, PSH1488, PSH1489, PSH1490, PSH1491, PSH1492, PSH1493, PSH1494, PSH1495, PSH1496, PSH1497, PSH1498, PSH1499, PSH1500, PSH1501, PSH1502, PSH1503, PSH1504, PSH1505, PSH1506, PSH1507, PSH1508, PSH1509, PSH1510, PSH1511, PSH1512, PSH1513, PSH1514, PSH1515, PSH1516, PSH1517, PSH1518, PSH1519, PSH1520, PSH1521, PSH1522, PSH1523, PSH1524, PSH1525, PSH1526, PSH1527, PSH1528, PSH1529, PSH1530, PSH1531, PSH1532, PSH1533, PSH1534, PSH1535, PSH1536, PSH1537, PSH1538, PSH1539, PSH1540, PSH1541, PSH1542, PSH1543, PSH1544, PSH1545, PSH1546, PSH1547, PSH1548, PSH1549, PSH1550, PSH1551, PSH1552, PSH1553, PSH1554, PSH1555, PSH1556, PSH1557, PSH1558, PSH1559, PSH1560, PSH1561, PSH1562, PSH1563, PSH1564, PSH1565, PSH1566, PSH1567, PSH1568, PSH1569, PSH1570, PSH1571, PSH1572, PSH1573, PSH1574, PSH1575, PSH1576, PSH1577, PSH1578, PSH1579, PSH1580, PSH1581, PSH1582, PSH1583, PSH1584, PSH1585, PSH1586, PSH1587, PSH1588, PSH1589, PSH1590, PSH1591, PSH1592, PSH1593, PSH1594, PSH1595, PSH1596, PSH1597, PSH1598, PSH1599, PSH1600, PSH1601, PSH1602, PSH1603, PSH1604, PSH1605, PSH1606, PSH1607, PSH1608, PSH1609, PSH1610, PSH1611, PSH1612, PSH1613, PSH1614, PSH1615, PSH1616, PSH1617, PSH1618, PSH1619, PSH1620, PSH1621, PSH1622, PSH1623, PSH1624, PSH1625, PSH1626, PSH1627, PSH1628, PSH1629, PSH1630, PSH1631, PSH1632, PSH1633, PSH1634, PSH1635, PSH1636, PSH1637, PSH1638, PSH1639, PSH1640, PSH1641, PSH1642, PSH1643, PSH1644, PSH1645, PSH1646, PSH1647, PSH1648, PSH1649, PSH1650, PSH1651, PSH1652, PSH1653, PSH1654, PSH1655, PSH1656, PSH1657, PSH1658, PSH1659, PSH1660, PSH1661, PSH1662, PSH1663, PSH1664, PSH1665, PSH1666, PSH1667, PSH1668, PSH1669, PSH1670, PSH1671, PSH1672, PSH1673, PSH1674, PSH1675, PSH1676, PSH1677, PSH1678, PSH1679, PSH1680, PSH1681, PSH1682, PSH1683, PSH1684, PSH1685, PSH1686, PSH1687, PSH1688, PSH1689, PSH1690, PSH1691, PSH1692, PSH1693, PSH1694, PSH1695, PSH1696, PSH1697, PSH1698, PSH1699, PSH1700, PSH1701, PSH1702, PSH1703, PSH1704, PSH1705, PSH1706, PSH1707, PSH1708, PSH1709, PSH1710, PSH1711, PSH1712, PSH1713, PSH1714, PSH1715, PSH1716, PSH1717, PSH1718, PSH1719, PSH1720, PSH1721, PSH1722, PSH1723, PSH1724, PSH1725, PSH1726, PSH1727, PSH1728, PSH1729, PSH1730, PSH1731, PSH1732, PSH1733, PSH1734, PSH1735, PSH1736, PSH1737, PSH1738, PSH1739, PSH1740, PSH1741, PSH1742, PSH1743, PSH1744, PSH1745, PSH1746, PSH1747, PSH1748, PSH1749, PSH1750, PSH1751, PSH1752, PSH1753, PSH1754, PSH1755, PSH1756, PSH1757, PSH1758, PSH1759, PSH1760, PSH1761, PSH1762, PSH1763, PSH1764, PSH1765, PSH1766, PSH1767, PSH1768, PSH1769, PSH1770, PSH1771, PSH1772, PSH1773, PSH1774, PSH1775, PSH1776, PSH1777, PSH1778, PSH1779, PSH1780, PSH1781, PSH1782, PSH1783, PSH1784, PSH1785, PSH1786, PSH1787, PSH1788, PSH1789, PSH1790, PSH1791, PSH1792, PSH1793, PSH1794, PSH1795, PSH1796, PSH1797, PSH1798, PSH1799, PSH1800, PSH1801, PSH1802, PSH1803, PSH1804, PSH1805, PSH1806, PSH1807, PSH1808, PSH1809, PSH1810, PSH1811, PSH1812, PSH1813, PSH1814, PSH1815, PSH1816, PSH1817, PSH1818, PSH1819, PSH1820, PSH1821, PSH1822, PSH1823, PSH1824, PSH1825, PSH1826, PSH1827, PSH1828, PSH1829, PSH1830, PSH1831, PSH1832, PSH1833, PSH1834, PSH1835, PSH1836, PSH1837, PSH1838, PSH1839, PSH1840, PSH1841, PSH1842, PSH1843, PSH1844, PSH1845, PSH1846, PSH1847, PSH1848, PSH1849, PSH1850, PSH1851, PSH1852, PSH1853, PSH1854, PSH1855, PSH1856, PSH1857, PSH1858, PSH1859, PSH1860, PSH1861, PSH1862, PSH1863, PSH1864, PSH1865, PSH1866, PSH1867, PSH1868, PSH1869, PSH1870, PSH1871, PSH1872, PSH1873, PSH1874, PSH1875, PSH1876, PSH1877, PSH1878, PSH1879, PSH1880, PSH1881, PSH1882, PSH1883, PSH1884, PSH1885, PSH1886, PSH1887, PSH1888, PSH1889, PSH1890, PSH1891, PSH1892, PSH1893, PSH1894, PSH1895, PSH1896, PSH1897, PSH1898, PSH1899, PSH1900, PSH1901, PSH1902, PSH1903, PSH1904, PSH1905, PSH1906, PSH1907, PSH1908, PSH1909, PSH1910, PSH1911, PSH1912, PSH1913, PSH1914, PSH1915, PSH1916, PSH1917, PSH1918, PSH1919, PSH1920, PSH1921, PSH1922, PSH1923, PSH1924, PSH1925, PSH1926, PSH1927, PSH1928, PSH1929, PSH1930, PSH1931, PSH1932, PSH1933, PSH1934, PSH1935, PSH1936, PSH1937, PSH1938, PSH1939, PSH1940, PSH1941, PSH1942, PSH1943, PSH1944, PSH1945, PSH1946, PSH1947, PSH1948, PSH1949, PSH1950, PSH1951, PSH1952, PSH1953, PSH1954, PSH1955, PSH1956, PSH1957, PSH1958, PSH1959, PSH1960, PSH1961, PSH1962, PSH1963, PSH1964, PSH1965, PSH1966, PSH1967, PSH1968, PSH1969, PSH1970, PSH1971, PSH1972, PSH1973, PSH1974, PSH1975, PSH1976, PSH1977, PSH1978, PSH1979, PSH1980, PSH1981, PSH1982, PSH1983, PSH1984, PSH1985, PSH1986, PSH1987, PSH1988, PSH1989, PSH1990, PSH1991, PSH1992, PSH1993, PSH1994, PSH1995, PSH1996, PSH1997, PSH1998, PSH1999, PSH2000
Class of Survey	Class 1	Class of Survey	Class 1
Zone	55	Class of Survey	Class 1
Cat. No. 31/1498		Cat. No. 31/1498	