

**SUPPLEMENT** to the Solomon Islands GazetteThursday 4<sup>th</sup> November, 2010

S.I. No.64

---

---

[Legal Notice No. 147]**SHIPPING (STCW CONVENTION) REGULATIONS 2010****ARRANGEMENT OF REGULATIONS****PART 1 - PRELIMINARY**

1. Citation and Commencement
2. Interpretation
3. STCW Convention etc. to be carried on vessels
4. Application of these Regulations

**PART 2 - CONTROL PROCEDURES**

5. Powers to exercise Control Procedures
6. Register of Seafares
7. General Offences against these Regulations and the Convention

**PART 3 - RESPONSIBILITIES OF OWNERS, MASTERS AND SEAFARES**

8. Responsibilities of Owners to provide contract and instruction
9. Joint responsibilities of Owners and Masters
10. Responsibilities of Masters
11. Responsibilities of Seafares
12. Offences against this Part

**PART 4 - WATCHKEEPING ON VESSELS**

13. Watchkeeping Arrangements
14. Fitness for Duty

**PART 5 - MANNING OF VESSELS**

15. Manning Requirements
  16. Offences against this Part
-

**PART 6 - TRAINING AND CERTIFICATION OF SEAFARERS**

17. Training Assessment and Powers to make Rules
18. Approved Training Institutions
19. Issue of Certificates
20. Recognition of Certificates
21. Endorsements of Certificates
22. Revalidation of Certificates
23. Dispensations to be in accordance with the Convention
24. Transitional Provisions
25. Refresher Courses
26. Offences against this Part
27. Fees for certificates, assessments and endorsements

**PART 7 - SPECIAL TRAINING REQUIREMENTS**

28. Basic Safety Training
29. Training in Proficiency in Survival Craft etc
30. Mandatory Minimum Requirements for Advanced Fire Fighting
31. Mandatory Minimum Requirements for Medical First Aid
32. Mandatory Minimum Training for Seafares on Tankers
33. Mandatory Minimum Training for Seafares on Ro-Ro Passenger Vessels
34. Fees for certificates and assessments
35. Offences against this Part

**PART 8 - MEDICAL STANDARDS**

36. Application of this Part
  37. Standards of Medical Fitness
  38. Medical Fitness Certificates
  39. Duration of Medical Fitness Certificates
  40. Re-Examination
  41. Review of a Medical Fitness Certificate
  42. Appeal of a Reviewed Medical Fitness Certificate
  43. Costs of Medical Examinations conducted for Reviews and Appeals
  44. Medical Fitness Certificates Required
  45. Offences against this Part
-

**PART 9 - QUALITY STANDARDS**

- 46. Application of this Part
- 47. Approved Quality Standards
- 48. Independent Evaluation
- 49. Reporting Requirements

**PART 10 - INVESTIGATIONS, SUSPENSIONS AND CANCELLATIONS**

- 50. Application of this Part
- 51. Impartial Investigation
- 52. Powers of Impartial Investigation as to Certificates of Competency
- 53. Appeals
- 54. Immunities

**PART 11 - REQUIREMENTS APPLYING TO MARINE RADIO DUTIES**

- 55. Application of this Part
- 56. Application of the Radio Regulations
- 57. Certification of Radio Personnel
- 58. Radio Certificates
- 59. Offences against this Part

**PART 12 - GENERAL PROVISIONS**

- 60. Use of Forms
- 61. Periodic review of Fees
- 62. Repeal and Transitional
- 63. Existing Certificates

## Schedules

- Schedule 1 - Application of STCW Regulations
- Schedule 2 - Manning Requirements and Classes of Certificates
- Schedule 3 - Number of Certificates of Proficiency - Passenger Vessels
- Schedule 4 - Safe Manning Certificates
- Schedule 5 - Classes of Certificates and the Pre-Requisites for their Issue
- Schedule 6 - Certificates Recognised in Solomon Islands
- Schedule 7 - List of Base Fees
- Schedule 8 - Medical Standards
- Schedule 9 - Standard Forms

## SHIPPING ACT 1998

(No.5 of 198)

## SHIPPING (STCW CONVENTION) REGULATIONS 2010

IN exercise of the powers conferred upon me by section 108 of the Shipping Act 1998, I JACKSON FIULAU, Minister of Infrastructure Development do hereby make these Regulations -

## PART 1 - PRELIMINARY

Citation and  
commence-  
ment

1. These Regulations may be cited as the Shipping (STCW Convention) Regulations 2010 and shall come into force on the 1st day of July 2010.

Interpretation  
requires -

2. (1) In these Regulations, unless the context otherwise requires -

“Act” means the Shipping Act 1998;

“Administration” means the Solomon Islands Maritime Safety Administration established under the Maritime Safety Administration Act 2009;

“Appropriate certificate” means a certificate held by a seafarer appropriate for the size, type, trading area and kilowatts of the main propulsion power of the set out in Schedule 5 to these Regulations;

“Approved” means approved by the Minister responsible for Shipping;

“Assessor” means a person approved by the Director to conduct assessments under these Regulations;

“Certificate” means -

(a) a certificate of competency issued to a seafarer under section 96 of the Act and in accordance with Part 6 of these Regulations;

(b) a certificate of competency revalidated under regulation 22; or

(c) a certificate of competency issued to a seafarer by the maritime administration of another Party and recognised by the Minister under regulation 20;

“Certificate of Proficiency” means a short course certificate issued to a seafarer who has demonstrated proficiency according to the standards required under -

- (a) Chapter V of the Code on standards regarding special training requirements for personnel on certain types of ships; and
- (b) Chapter VI of the Code on standards regarding emergency, occupational safety, medical care and survival functions, but which is lower than a certificate of competency;

“Code” means the Seafarers’ Training, Certification and Watchkeeping Code attached as Resolution 2 to the Final Act of the 1995 STCW Conference;

“Convention” means the International Convention on Standards of Training, Certification and Watchkeeping for Seafarers, 1978 (as amended in 1995), and including any other amendments that are accepted by or binding on Solomon Islands;

“Designated physician” means a lawfully registered medical practitioner approved by the Director for the purpose of conducting medical examinations of seafarer;

“Director” means the Director of Marine holding office in accordance with the Maritime Safety Administration Act 2009;

“Dispensation” means a dispensation from a requirement of these Regulations or the Convention or the STCW Regulations or the Code, granted either generally or in a particular case by the Director under regulation 23 and in accordance with Article VIII of the Convention.

“Endorsement” means an endorsement to a certificate made by the Director under regulation 21, and includes any lawful endorsement made by the maritime administration of another Party;

“Examiner” means a person appointed by the Minister to conduct examinations under these Regulations;

“Exclusive Economic Zone” has the meaning given to it in the Delimitation of Marine Waters Act [Cap. 95];

“GMDSS” means the Global Maritime Distress and Safety System as prescribed in SOLAS;

“Government” means the Government of the Solomon Islands;

“IMO” means the International Maritime Organisation;

“Investigation” means an impartial investigation conducted in accordance with STCW Regulation 1/5 paragraph 1;

“Liquefied Gas Tanker” means a vessel constructed or adapted and used for the carriage in bulk of any liquefied gas or other product listed in chapter 19 of the International Gas Carrier Code;

“Maritime Training Institution” means a training institution approved by the Minister for the training of seafarers to the level stipulated under the Convention for the issuance of STCW Convention certificates in accordance with these Regulations;

“Oil Tanker” means a vessel constructed and used for the carriage of petroleum and petroleum products in bulk;

“Owner” means an owner or operator of a vessel or a bareboat charterer of a vessel and includes a “company” as defined in Regulation 1/1 of the Convention;

“Party” means a Party to the Convention;

“Physicians Guide to STCW-95” means a publication under that title and approved by the Director for use under these Regulations;

“Port State” means the State that is a Party in which a vessel of another Party is situated;

“Port State Control” means the control procedures under Article X and Regulation 1/4 of the Convention;

---

“Port State Control Officer” means a surveyor duly appointed under section 55 of the Act;

“Radio Regulations” means the Radio Regulations annexed to, or regarded as being annexed to, the most recent International Telecommunications Union Convention in force at any time;

“Recognised” means recognised by the Director under regulation 20;

“Ro-Ro passenger ship” means a passenger ship with Ro-Ro cargo spaces or special category spaces as defined by SOLAS;

“Safe Manning Certificate” means a certificate issued by the Director attesting that the requisite number of seafarers, each holding the appropriate qualification for service in the particular capacity, are on board the vessel for its intended voyage;

“Safety Officers” means any surveyor employed by the Administration in accordance with Part IV of the Act;

“School of Marine and Fisheries Studies” means the School of Marine and Fisheries Studies of Solomon Islands;

“Sea Area A1” means an area within the radiotelephone coverage of at least one VHF coast station in which continuous digital selective calling (DSC) alerting is available, as may be defined by a Contracting Government;

“Sea Area A2” means an area, excluding sea area A1, within the radiotelephone coverage of at least one MF coast station in which continuous DSC alerting is available, as may be defined by a Contracting Government;

“Sea Area A3” means an area, excluding areas A1 and A2, within the coverage of INMARSAT geostationary satellite in which continuous alerting is available; and

“Sea Area A4” means an area that is outside sea areas A1, A2 and A3;

“Seafarer” means a person employed in any capacity on a vessel and includes a person who is employed, or who seeks employment, as master, officer, or rating on a vessel;

“Seagoing Service” means service on board a vessel relevant to the issue of a certificate or other qualifications;

“SOLAS” means the International Convention for the Safety of Life at Sea, 1974, as amended by the Protocols of 1978 and any amendments from time to time adopted by IMO and accepted by the Government;

“Solomon Islands vessel” means a vessel that is registered or licensed in Solomon Islands under the Act;

“STCW Regulation” means the Regulations contained in the Annex to the Convention;

“Surveyor” means a person appointed as such under section 55 of the Act;

“Telecommunication Convention” means the International Telecommunication Union (ITU) Convention and associated Recommendations;

“Vessel” means a vessel to which these Regulations apply in accordance with regulation 4.

(2) In compliance with STCW Regulation 1/3, the following terms apply in these Regulations -

“Inshore Voyage” means a voyage, trade or operation of a vessel within 15 nautical miles of the Coast within Solomon Islands;

“Near-Coastal Voyage” means a voyages, trade or operation of a vessel within 200 nautical miles from the baselines and includes voyages within the Exclusive Economic Zone of Solomon Islands;

---



“Sheltered Waters Voyage” means a limited voyage, trade or operation of a vessel within inland waters and protected waters adjacent to beaches or landings within Solomon Islands.

“Territorial Waters Voyage” means a voyage, trade or operation of a vessel within 12 nautical miles from the baselines and includes voyages within the territorial waters with Solomon Islands;

“Unlimited Voyage” means a voyage, trade or operation of a vessel, which extends beyond 200 nautical miles from the baselines or beyond the Exclusive Economic Zone of Solomon Islands.

(3) Where a term is used in these Regulations that is defined in Article II of the Convention or in Regulation 1/1 of the STCW Regulations, the term has the same meaning as in the Convention or STCW Regulations, unless a different meaning is given to that term by these Regulations.

3. All vessels registered in Solomon Islands and to which the Convention applies must carry a copy of—

STCW  
Convention etc.  
to be carried on  
vessels

- (a) the Convention;
- (b) the STCW Regulations;
- (c) the Code (IMO Publication IMO-938E); and
- (d) these Regulations

4. (1) The Regulations apply to —

Application of  
these  
Regulations

- (a) all Solomon Islands vessels;
- (b) all seafarers employed on Solomon Islands vessels;
- (c) all owners and masters of Solomon Islands vessels;
- (d) all Solomon Islands seafarers;
- (e) all seafarers or holders of certificates recognised and endorsed under the authority of these Regulations;

(2) Notwithstanding Article III of the Convention, these Regulations apply to fishing vessels.

(3) For the purposes of control under Part 2, the provisions of the Convention, the STCW Regulations and the Code apply to –

- (a) all foreign vessels in Solomon Islands waters;
- (b) all owners and masters of such vessels; and
- (c) all seafares employed on such vessels

(4) The applicable STCW Regulation to be applied under these Regulations in relation to matters involving service capacity, certificates and limitations on areas of operation applying to certificates are as stated in Part 1 of Schedule 1.

(5) The applicable STCW Regulation to be applied under these Regulations in relation to mandatory short courses and special training requirements are as stated in Part 2 of Schedule 1.

#### PART 2 – CONTROL PROCEDURES

Powers to  
exercise Control  
Procedures

**5.** (1) A Surveyor duly appointed under the Act may exercise control procedures described in Article X and Regulation 1/4 of the Convention.

(2) In the absence of clear grounds for believing that the standards of the Convention and Code are not being maintained, control is limited to verifying that all certificates are in order and that the numbers and certificates of seafares are in conformity with the Safe Manning Certificate.

(3) In the event there are clear grounds for believing that the standards of the Convention and Code are not being maintained, the competence of seafarers may be assessed in accordance with the control procedures specified in Section A-1/4 of the Code.

---

- (4) For the purposes of this regulation, "clear grounds" includes –
- (a) a collision, grounding or standing;
  - (b) an illegal discharge;
  - (c) an operation that may pose a danger to lives, property or the marine environment; and
  - (d) any deficiencies in a vessel's equipment or documentation
- (5) For the purposes of sub-regulation (4)(d), "deficiencies", in respect of clear grounds, includes –
- (a) any failure to hold an appropriate certificate;
  - (b) any failure to comply with the provisions of the Safe Manning Certificate;
  - (c) watch arrangements that do not conform with those specified by the flag state administration;
  - (d) absence during a watch of a qualified seafarer;
  - (e) inability to provide seafarers who are sufficiently rested or otherwise fit for watchkeeping duties.

**6.** (1) The Director shall maintain a Registrar of Seafarers and <sup>Register of Seafarers</sup> record in it the particulars of documents issued under these Regulations, including –

- (a) all certificates issued;
- (b) all endorsements made to certificates;
- (c) all certificates suspended or cancelled;
- (d) all certificates issued by another country and recognized as valid on Solomon Islands vessels;
- (e) all dispensations and exemptions granted under these Regulations;

- (f) all certificates issued or recognized that have been revalidated under these Regulations;
- (g) all certificates issued to replace those lost or expired; and
- (h) all medical certificates issued to seafarers under Part 8.

(2) The Director must make information from the Register available to the Secretary General of IMO, any Party, and any ship owner seeking to ascertain the authority and validity of certificates and endorsements issued in Solomon Islands.

General  
Offences  
against these  
Regulations  
and the  
Convention

7. (1) Any person who –
- (a) contravenes these Regulations, the Convention, the STCW Regulations or the Code; or
  - (b) fails to do anything required by these Regulations, the Convention, the STCW Regulations or the Code –
- commits an offence and shall be liable upon conviction to the penalty prescribed in sub-regulations (2) - (4).
- (2) If the offence is committed by an owner, agent or operator of a vessel –
- (a) in the case of an individual - the penalty shall be a fine not exceeding 100 penalty units or a term of imprisonment for up to 2 years, or both;
  - (b) in the case of a body corporate - to a fine not exceeding 1,000 penalty units.
- (3) If the offence is committed by the master of a vessel the ~~penalty shall be a fine not exceeding 200 penalty units or a term of imprisonment for up to 2 year, or both.~~
- (4) If the offence is committed by a any other ship's officer or by a seafarer the penalty shall be a fine not exceeding 30 penalty units or a term of imprisonment for up to 3 months, or both.

**PART 3 - RESPONSIBILITIES OF OWNERS, MASTERS  
AND SEAFARERS**

8. (1) The requirements of these Regulations and the Convention apply to the employment of all seafarers on vessels to which these Regulations apply, and no owner or master may engage a seafarer in contravention of any such requirement.

Responsibilities  
of Owners to  
provide contract  
and instruction

(2) Each owner of a vessel must provide written instructions to the master of the vessel which clearly state the policies and procedures to be followed to ensure that all seafarers on board the vessel are given a reasonable opportunity to become familiar with –

- (a) the shipboard equipment and operating procedures; and
- (b) any other arrangements needed for the proper performance of their duties before being assigned to those duties.

(3) The policies and procedures referred to in sub-regulation (2) must –

- (a) specify a reasonable period of time during which each seafarer will have an opportunity to become familiar with –
  - (i) the specific equipment the seafarer will be operating; and
  - (ii) vessel-specific the watchkeeping, safety, environmental protection and emergency procedures and arrangements that are specific to the vessel and which the seafarer needs to know to properly perform the assigned duties;

- (b) designate a duly qualified and experienced seafarer who is to be responsible for ensuring that an opportunity is provided for each seafarer to receive essential information in a language that the seafarer understands; and
  - (c) ensure that –
    - (i) seafarers are free from fatigue;
    - (ii) rest periods are observed;
    - (iii) watch rosters are posted in accordance with the watchkeeping arrangements specified under Part 4; and
    - (iv) the rosters are readily available for inspection by Port State Control Officers and seafarers.
- (4) The owner of a vessel must provide introductory programmes aimed at assisting newly employed seafarers to familiarize themselves with all procedures and equipment relating to their area of responsibility on the specific vessel on which they are employed.
- (5) The owner of a vessel must enter into an employment contact with each seafarer for every voyage, and every agreement must be constituted by Articles of Agreement or an employment contract, signed by both the Master and the seafarer.
- (6) The Article of Agreement or employment contract required under sub-regulation (5) must –
- (a) contain the bio-data of the seafarer required by the Convention;
  - (b) specify the date on which the seafarer was engaged and in what capacity, the seafarer's certificate, the nature of the voyage, and the date of the seafarer's discharge.
-

9. (1) An owner and master of a vessel must each ensure that – Joint responsibilities of Owners and Masters
- (a) all seafarers employed on the vessel are duly certificated;
  - (b) the vessel is manned in compliance with the applicable safe manning requirements prescribed in Part 5;
  - (c) documentation and data relevant to all seafarers employed on the vessel are maintained and readily accessible and include, without being limited to, documentation and data on their experience, training, medical fitness and competency in assigned duties;
  - (d) all seafarers employed on the vessel are familiar with their specific duties and with all vessel arrangements, installations, equipment, procedures and vessel characteristics relevant to their routine or emergency duties; and
  - (e) the vessel's complement can effectively co-ordinate their activities in an emergency situation and in performing functions vital to safety or to the prevention or mitigation of pollution.
- (2) The owner and the master of a vessel must each ensure that every seafarer can make a knowledgeable and informed contribution to the safe operation of the vessel.
- (3) The date of engagement and discharge of every seafarer on a vessel, and particulars of the vessel (gross tonnage and the main propulsion power in kilowatts) must be recorded by the owner or master in the Seafarer's Employment Record Book (SERB).

- (4) A master must take all steps necessary to implement any company instructions issued in accordance with regulation 7, and such steps must include –
- (a) identifying all seafares who are newly employed on board the vessel before they are assigned to any duties;
  - (b) providing the opportunity for all newly arrived seafares to –
    - (i) visit the spaces, in which their primary duties are to be performed;
    - (ii) get acquainted with the location, controls and display features of equipment they will be operating or using; and
    - (iii) activate the equipment when possible and perform functions using the controls on the equipment; and
    - (iv) observe and ask questions of someone who is already familiar with the equipment, procedures and other arrangements, and who can communicate information in language which the seafarer understands; and
  - (c) providing for a suitable period of supervision when there is any doubt that a newly employed seafarer is familiar with the shipboard equipment, operating procedures and other arrangements needed for the proper performance of his or her duties.
-



**10.** (1) The master of a vessel must keep on board the vessel for the duration of the voyage Articles of Agreement evidencing the contract of employment between the owner and every seafarer on board the vessel. Responsibilities of Masters

(2) The master must sign the Articles of Agreement or employment contract on behalf of the owner and ensure that the seafarer fully understands their meaning before appending his or her signature or mark.

**11.** (1) A seafarer assigned to a vessel must take full advantage of every opportunity provided to become familiar with the shipboard equipment, operating procedures, and other arrangements needed for the proper performance of his or her duties. Responsibilities of seafarers

(2) Immediately upon arriving on board for the first time, a seafarer has the responsibility to become acquainted with the vessel's working environment, particularly with respect to new or unfamiliar equipment, procedures, or arrangements.

(3) A seafarer who does not promptly attain the level of familiarity required for performing his or her duties must bring this fact to the attention of the seafarer's supervisor.

**12.** (1) An owner who fails to comply with any requirement under regulations 8 or 9 commits an offence and shall be liable upon conviction. Offences against this Part

(a) in the case of an individual - to a fine not exceeding 100 penalty units or to a term of imprisonment for up to 2 years, or both;

(b) in the case of a body corporate - to a fine not exceeding 500 penalty units;

(2) A master who fails to comply with any requirement under regulations 9 or 10 commits an offence and shall be liable upon conviction to a fine not exceeding 100 penalty units or to a term of imprisonment for up to 1 year, or both.

(3) A seafarer who fails to comply with any requirement under regulation 11 commits an offence and shall be liable upon conviction to a fine not exceeding 30 penalty units or to a term of imprisonment for up to 3 months, or both.

## PART 4 - WATCHKEEPING ON VESSELS

Watchkeeping  
arrangements

**13.** (1) The owner, master, chief engineer officer and all watchkeeping personnel of every vessel must observe the requirements, principles and guidelines set out in the Convention and the Code and published in the "Standards Regarding Watchkeeping under STCW-95" to ensure that a safe watch is maintained at all times.

(2) The master of a vessel must ensure that watchkeeping arrangements are adequate to maintain a safe watch while the vessel is at sea.

(3) Appropriate and effective watches must be maintained for the purpose of safety at all times –

(a) when the vessel is at anchor, moored or alongside a berth; and

(b) when the vessel is carrying hazardous cargo.

(4) The watchkeeping arrangements and principles to be observed are those contained in Section A-VIII/2 of the Code, and due regard must be had to the guidance contained in Section B-VIII/2 of the Code.

(5) The owner, master, chief engineer and every seafarer with watchkeeping responsibilities on a vessel to which these Regulations apply, must observe the requirements, principles and guidelines in respect of Watchkeeping set out in the Convention and the Code and published in the "Standards Regarding Watchkeeping under STCW-95".

(6) An owner, master, chief engineer or seafarer with watchkeeping duties who fails to comply with any requirement under this regulation commits an offence and shall be liable upon conviction –

(a) if the offence is committed by an owner –

(i) in the case of an individual - to a fine not exceeding 100 penalty units or to a term of imprisonment for up to 2 years, or both;

(ii) in the case of a body corporate - to a fine not exceeding 500 penalty units;

- (b) if the offence is committed by a master or chief engineer - to a fine not exceeding 100 penalty units or to a term of imprisonment for up to 1 year, or both;
- (c) if the offence is committed by a seafarer other than the master or chief engineer - to a fine not exceeding 30 penalty units or to a term of imprisonment for up to 3 months, or both.

**14.** (1) The system of watches aboard a vessel must be so <sup>Fitness for</sup> arranged and duties so organized that – <sub>duty</sub>

- (a) the efficiency of all personnel with watchkeeping duties is not impaired by fatigue; and
  - (b) the first watch at the commencement of a voyage and subsequent relieving watches are sufficiently rested and otherwise fit for duty.
- (2) Without limiting sub-regulation (1) –
- (a) all seafarers who are assigned duty as officer in charge of a watch or as a rating forming part of a watch must be allowed a minimum of 10 hours rest in any 24 hour period;
  - (b) the hours of rest can be divided into no more than 2 periods, one of which must be at least 6 hours in length;
  - (c) the requirements for the rest periods prescribed in paragraphs (a) and (b) need not be maintained in the case of an emergency or drill, or in other overriding operational conditions;
  - (d) notwithstanding paragraphs (a) and (b), the minimum period of 10 hours may be reduced to not less than 6 consecutive hours, but any such reduction must not extend beyond 2 days and not less than 70 hours of rest need be provided in each 7 day period; and
  - (e) watch schedules must be posted on board where they are easily accessible to all seafarers with watchkeeping duties.

**PART 5 - MANNING OF VESSELS**Manning  
Requirements

**15.** (1) The number of seafarers and classes of certificate to be held by seafarers required for the safe manning of each class of vessels are specified in Schedule 2.

(2) In addition to the certificates required under sub-regulation (1), every passenger vessel must carry the number of persons holding certificates of proficiency in Survival Craft and Rescue Boats (other than fast Rescue Boat) as required by Section A-VI/2 of the Code –

(a) in the case of survival craft and rescue boats - as set out in Part 7 of these Regulations; and

(b) as set out in Schedule 3 to these Regulations.

(3) The minimum number of Solomon Islands citizens employed on each Solomon Islands vessel shall be as is determined by the Minister from time to time.

(4) The number of seafarers and classes of certificates for the safe manning of vessels laid up and securely moored shall be as is determined the Director from time to time.

(5) If a vessel has been manned in accordance with these Regulations the Director may issue a Safe Manning Certificate in accordance with Schedule 4.

(6) The Minister may, upon application, grant an exemption from the requirements prescribed in Schedule 2 if the Minister considers that to do so is in the public interest and will not compromise the safety of the vessel, its crew, passengers or cargo.

(7) The Director may impose additional operating limits on vessels operating on Inshore and Sheltered waters.

(8) For the purpose of these Regulations an enclosed vessel of 20 gross tons is deemed to be equivalent to an open vessel of 15 metres length overall.

**16.** (1) An owner of a Solomon Islands vessel who engages a seafarer, or who causes or permits to be engaged as a seafarer, a person not duly certified in accordance with this Part commits an offence, and shall be liable upon conviction. <sup>Offences against this Part</sup>

- (a) in the case of an individual - to a fine not exceeding 100 penalty units or to a term of imprisonment for up to 2 years, or both; or
- (b) in the case of a body corporate - to a fine not exceeding 500 penalty units.

(2) An owner of a Solomon Islands vessel who causes or permits the vessel to go to sea when it is not safely manned in accordance with the prescribed number of Solomon Islands seafarers commits an offence, and shall be liable upon conviction.

- (a) in the case of an individual - to a fine not exceeding 100 penalty units or to a term of imprisonment for up to 2 years, or both; or
- (b) in the case of a body corporate - to a fine not exceeding 500 penalty units.

(3) An owner of a vessel who causes or permits the vessel to go to sea when it is not manned with the prescribed number of Solomon Islands seafarers commits an offence, and shall be liable upon conviction –

- (a) in the case of an individual - to a fine not exceeding 100 penalty units or to a term of imprisonment for up to 2 years, or both; or
- (b) in the case of a body corporate - to a fine not exceeding 500 penalty units.

(4) A master of a Solomon Islands vessel who engages as a seafarer a person not duly certificated, commits an offence, and shall be liable upon conviction to a fine not exceeding 100 penalty units or to a term of imprisonment for up to 1 year, or both.

(5) A master of a vessel who takes the vessel to sea when it is not safety manned in accordance with this Part commits an offence, and shall be liable upon conviction to a fine not exceeding 100 penalty units or to a term of imprisonment for up to 1 year, or both.

(6) A master of a Solomon Islands vessel who takes the vessel to sea when it is not manned with the prescribed number of Solomon Islands seafarers commits an offence, and shall be liable upon conviction to a fine not exceeding 100 penalty units or to a term of imprisonment for up to 1 year, or both.

(7) If these Regulations require a function or service on a vessel to be performed by a seafarer holding an appropriate certificate, a master who requires or permits that function or service to be performed by a seafarer not holding the required certificate, a valid dispensation, or a recognition endorsement, commits an offence, and shall be liable upon conviction to a fine not exceeding 100 penalty units or to a term of imprisonment for up to 1 year, or both.

#### PART 6 - TRAINING AND CERTIFICATION OF SEAFARERS

Training  
assessment  
and power to  
make rules

**17.** (1) The training and assessment of competence of seafarers in Solomon Islands shall be administered, supervised and monitored in accordance with the provisions of Section A-1/6 of the Code.

(2) Every person responsible for the training and assessment of competence of seafarers must be appropriately qualified in accordance with the provisions of Section A-1/6 of the Code for the type and level of training or assessment involved.

(3) The assessment of competence of seafarers in Solomon Islands shall be those as specified in Schedule 5 and must be conducted in accordance with the provisions of the Convention and the STCW Regulations and to the standards specified in the relevant section of the Code.

(4) Curricula developed for training programmes offered in Solomon Islands shall be based on the relevant IMO Model courses or courses of similar content and must incorporate the relevant requirements of the Code.

- (5) All modules prescribed shall be valid for a period of 5 years from the date of achievement.
- (6) The training and assessment of seafarers shall be carried out in the English language.
- (7) The Minister may make Rules prescribing standards and procedure for –
- (a) course outlines, detailed curricula and methods of assessment;
  - (b) procedures for making applications for certificates, and for the calculation of sea service and the determination of prerequisites;
  - (c) conducting examinations and determining pass marks;
  - (d) procedures for re-sitting examinations;
  - (e) forms of safety training certificates;
  - (f) forms of certificates of competency and endorsements, and for the recognition of similar certificates issued by another administration; and
  - (g) the format of sea service record in the Seafarer's Employment and Training Record Book.

**18.** (1) If the Minister is satisfied that an institution complies with all applicable provisions of the Convention, the STCW Regulations and the Code, the Minister may give written approval for that institution to provide training and assessment of seafarers. Approved  
Training  
Institutions

(2) For the purposes of these regulations, the School of Marine and Fisheries Studies is designated as an approved institution for maritime training and assessment in Solomon Islands.

(3) The Minister may appoint appropriately qualified Examiners and Assessors for specified types and levels of training and assessment of competence of seafarers.

- (4) The School of Marine and Fisheries Studies may issue an Assessment Results Form for a certificate of competency for each student who has satisfactorily completed each module of the course structure of the training programmes specified in Schedule 5.
- (5) The School of Marine and Fisheries Studies or any other approved training institution may issue certificates attesting to the satisfactory completion of short course listed in Schedule 6.
- (6) The head of the School of Marine and Fisheries Studies and the head of any other approved training institution must maintain a record of the assessment of all seafarers to whom Assessment Results Forms are issued.
- (7) The Minister may approve training courses for the lower classes of certificates to be provided by other training organizations if such courses are conducted in compliance with the requirements of the Code.
- (8) The assessment of trainees who have satisfactorily completed a course provided by any approved training organisation must be carried out by Examiners and Assessors appointed under sub-regulation (3).
- (9) The Director may issue, recognise or endorse Certificates of Competency or Proficiency listed in Schedule 6 to those seafarers who have satisfied the Examiners that they are competent in the functions and levels of responsibility mentioned in the certificate.
- (10) A Certificate of Competency or Proficiency issued to a seafarer by the Director shall be deemed to be sufficient evidence of a seafarer's competence in the functions and levels of responsibility mentioned in the certificate.

Issue of  
Certificates

- 19.** (1) The Administration is the authority for –
- (a) the approval and issue of certificates,
  - (b) the granting of exemptions and dispensations;
  - (c) the recognition and endorsement of corticates;and
  - (d) the suspension or cancellation of certificates



(2) The Director may take such administrative action as the Director considers necessary for the proper administration of the training and certification of seafarers in accordance with the provisions of the Convention, the Code and these Regulations.

(3) The classes of certificates that may be issued and the pre-requisites that candidates must satisfy for their issue, are as specified in Schedule 5.

(4) Candidates for certificates must provide satisfactory proof of –

- (a) their identity and age;
- (b) their medical fitness, in accordance with Part 8;
- (c) completion of sea-going service, training or re-training; and
- (d) any other requirements specified from time to time by the Director.

(5) The certificates issued under sub-regulations (1) and (2) shall be in a format similar to that set out in Section A-1/2 of the Code and shall be in the English language.

(6) Where a seafarer applies for a certificate, the pre-requisites and standards for which are prescribed in the Convention or the Code, that seafarer shall only be issued with a certificate if he or she is found to be duly qualified under the provisions of Article VI and Regulation 1/2 of the Convention, and the standards required by the Code.

(7) Where a seafarer applies for a certificate, the pre-requisites and standards for which are not prescribed in the Convention or the Code, that seafarer may be issued with a certificate if he or she is found to be duly qualified under the provisions of these Regulations.

(8) An Interim Certificate may be issued pending the issue of a Certificate of Competency.

(9) The Director shall maintain a record of all certificates, and all exemptions and dispensations issued, suspended or cancelled, and of all endorsements applying to any certificate.

(10) If the holder of a certificate or endorsement needs to wear a visual aid to meet the required medical standards, that fact must be recorded on the certificate or endorsement.

Recognition of  
Certificates

**20.** (1) A certificate issued by a Party and endorsed by the issuing State as complying with the provisions of the Convention and Code, as set out in Schedule 6, may be recognised by the Director, if the certificate –

- (a) is issued by a maritime administration, which the Administration recognises as having the facilities and procedures, standards of competence to fully comply with the requirements of the Convention;
- (b) has been issued, recorded and endorsed (if relevant) in compliance with the requirements of the Convention;
- (c) complies with the provisions of the Code;
- (d) is appropriate to the duties to be performed by the holder on the vessel in which the holder intends to serve; and
- (e) is valid under the Convention for the vessel and for the voyage on which the vessel is engaged.

(2) The Director shall ensure that the Party concerned is notified promptly of any significant change in the arrangements for the training and certification, in compliance with the Convention.

(3) Every master, mate, engineer and radio officer and every person who forms part of the deck or engineering watch on a vessel not registered in Solomon Islands but operating within Solomon Islands waters, must hold the appropriate certificate issued by a Party to the Convention for a vessel of that tonnage or propulsion power on the voyage in which it is engaged.

- (4) A seafarer who presents a certificate for recognition must have, in accordance with Regulation 1/10 of the Convention, an appropriate knowledge of the maritime legislation particular to the vessel and its area of operation, and which is relevant to the functions the seafarer is permitted by the certificate to perform.
- (5) When recognising a certificate under this regulation, the Director may endorse the certificate to attest to its recognition.
- (6) An endorsement made under sub-regulation (5) can only be made if all requirements of the Convention and these Regulations have been complied with.
- (7) The form of an endorsement under sub-regulation (5) shall be as is specified in paragraph 3 of section A-1/2 of the STCW Code.
- (8) All endorsements made in accordance with sub-regulations (4), (5), (6) and (7) shall –
- (a) be issued as separate documents;
  - (b) be assigned a unique number, or be assigned the same number as the certificate concerned, if that number is unique; and
  - (c) expire as soon as the certificate being endorsed expires or is withdrawn.
- (9) The capacity in which the holder of a certificate is authorised to serve shall be identified in the form of endorsement in terms identical to those used in the applicable safe manning requirements of the Administration.
- (10) Such an endorsement of recognition of a certificate issued by another Party may be known as a “Seagoing Licence”.
- (11) The Director may, under the provisions of Regulation 1/10 paragraph 5 of the Convention, if circumstances require, permit a seafarer to serve on a Solomon Islands vessel for a period not exceeding 3 months while holding an appropriate and valid certificate issued and endorsed by another Party pending its endorsement for service on Solomon Islands vessels.

(12) The Director may issue a certificate if documentary evidence confirming that the required training and competency provided by another Party is provided to the satisfaction of the Director to be a proper basis for the issue of the certificate.

Endorsements  
of Certificates

**21.** (1) Any endorsement of a certificate shall be made by the Director in the English language, and in a format similar to that illustrated in the Code, and shall form part of the certificate.

(2) No such endorsement may be made unless the Director is satisfied that all the requirements of the Convention have been complied with.

(3) Where an endorsement is requested attesting to the recognition of a certificate, the Director may only issue an endorsement if the Director is satisfied that the requirements of Regulation 1/2 and 1/10 of the Convention and Section A-1/10 of the Code have been complied with.

Revalidation  
of Certificate

**22.** (1) Every seafarer holding a certificate issued or recognized under these Regulations must, in order to qualify for seagoing service, hold a valid Medical Fitness Certificates, and be required at intervals not exceeding 5 years to establish continued professional competence in accordance with Section A-1/11 of the Code.

(2) A seafarer holding a qualification issued in accordance with the requirements of Regulations VI/1, VI/2, VI/3 and V/4 of the Convention must be required to demonstrate competence in accordance with the relevant requirements of Section A-VI/4 of the Code, at intervals not exceeding 5 years.

(3) If a seafarer seeking revalidation of a certificate –

(a) produces evidence to the satisfaction of the Director that the seafarer has –

(i) approved seagoing service involving the performance of functions appropriate to the certificate held, for a period of at least one year in total during the preceding 5 years; or

- (ii) performed functions considered by the Director to be equivalent to the seagoing service required under paragraph (i); or
- (iii) passed an approved test, or successfully completed an approved course or courses, or has satisfactorily completed seagoing service involving the performance of functions appropriate to the certificate held for a period of not less than 3 months in a supernumerary capacity, or in a lower officer rank than that for which the certificate held is valid immediately prior to taking up the rank for which it is valid; and

- (b) has paid the fee specified in Schedule 7, subject to regulation 61 –

the Director may revalidate the seafarer's certificate for a period not exceeding 5 years.

- (4) A certificate which has expired and has not been revalidated in accordance with these Regulations, is not valid for seagoing service.

**23.** No dispensations may be issued by the Director except in accordance with Article VIII of the Convention. Dispensations to be in accordance with the Convention

**24.** The transitional provisions in respect of training and certification of seafarers as set out in Article VII and Regulation 1/15 of the Convention must be followed in respect of the continued validation of certificates issued in Solomon Islands. Transitional Provisions

**25.** The holder of a certificate issued in accordance with the provisions of the Convention before 1st February 1997 may be required to undergo appropriate refresher and updating training and assessment to meet the standard of competence for the appropriate certificates specified in Part A of the Code, as determined by the Director. Refresher Courses

Offences  
against this  
Part

**26.** (1) A seafarer who makes a false declaration in order to obtain a Certificate of Competency or an endorsement under this Part commits an offence, and shall be liable upon conviction to a fine not exceeding 10 penalty units or to a term of imprisonment for up to 1 month, or both.

(2) A seafarer who obtains or uses a forged document or obtains a document by fraud for the purpose of obtaining a Certificate of Competency or an endorsement commits an offence, and shall be liable upon conviction to a fine not exceeding 10 penalty units or to a term of imprisonment for up to 1 month, or both.

(3) A seafarer who issues a false document or forges a document to facilitate the issue of a Certificate of Competency or an endorsement commits an offence, and shall be liable upon conviction to a fine not exceeding 10 penalty units or to a term of imprisonment for up to 1 month, or both.

(4) A person who holds a Certificate of Competency and who refuses, neglects or fails to produce it if requested to do so by the Director, a Port State Control Officer, a Marine Checker or the owner or master of any vessel to which these Regulations apply commits an offence and shall be liable upon conviction to a fine not exceeding 10 penalty units.

(5) A person who secures or attempts to secure employment on a ship by falsely pretending to be a qualified seafarer of any grade, commits an offence and shall be liable upon conviction to a fine not exceeding 10 penalty units.

(6) The owner or master of a vessel to which these Regulations apply who knowingly permits an unqualified seafarer to hold a relevant grade or designation, commits an offence and shall be liable upon conviction to a fine not exceeding 100 penalty units.

Fees for  
certificates,  
assessments  
and endorse-  
ments

**27.** Subject to regulation 61, the fees payable for receiving applications, assessing competence and issuing certificates or endorsements under this Part are as specified in Schedule 7.

## PART 7 - SPECIAL TRAINING REQUIREMENTS

28. (1) A master must ensure that every seafarer receives familiarisation and basic safety training or instruction in accordance with Regulation A-VI/1, and all such training and instruction must ensure that seafarers meet the appropriate standard of competence specified in that Regulation. Basic Safety Training

(2) A master must ensure that every person employed on a seagoing vessel receives familiarisation training in personal survival techniques as set out in STCW Regulation A-VI/1 and Table 1, A-1/1-2, A-VI/1-3 and A-VI/1-4 of the Code, before being assigned to any shipboard duties.

(3) The owner and master of a vessel must ensure that persons unfamiliar with the vessel are given a reasonable opportunity to become familiar with the shipboard equipment, operating procedures and other arrangements needed for the proper performance of their duties, and that each seafarer can make a knowledgeable and informed contribution to the safe operation of the ship in accordance with Part 3.

29. (1) Every person designated in the master list of a vessel to – Training  
Proficiency in  
survival craft  
etc.

- (a) command or be second in command of a survival craft;
- (b) be in charge of launching a survival craft; or
- (c) be a member of the operating crew of a marine escape system –

must hold a Certificate of Proficiency in accordance with this regulation.

(2) To qualify for a Certificate of Proficiency in survival craft and rescue boats other than rescue boats, a person must have –

- (a) approved seagoing service of not less than 12 months, or have attended an approved training course and have approved seagoing service of not less than 6 months; and

(b) achieved the standard of competence for Certificates of Proficiency in survival craft and rescue boats other than fast rescue boats set out in Section A-VI/2, paragraph 1 to 4 of the Code.

(3) To qualify for a Certificate of Proficiency in fast rescue boats must –

- (a) be the holder of a Certificate of Proficiency in survival craft and rescue boats other than fast rescue boats;
- (b) have attended an approved training course; and
- (c) meet the standard of competence for certificates of proficiency in fast rescue boats set out in Section A-VI/2, paragraphs 5 to 8 of the Code.

Mandatory  
Minimum  
Requirements  
for Advanced  
Fire Fighting

**30.** (1) Every person on a vessel who is designated to control fire-fighting operations must have successfully completed advance training in fire fighting techniques in accordance with the provisions of Section A-VI/3 of the Code and must meet the standard of competence specified in that section of the Code.

(2) A candidate for a Certificate of Proficiency must provide evidence of having achieved the required standard of competence within the previous 5 years, in accordance with the methods of demonstrating competence and the criteria for evaluating competence tabulated in columns 3 and 4 of Table A-VI/3 of the Code.

(3) Where training in advanced fire fighting is not included in the qualifications for the Certificate of Competency to be issued, a special certificate or documented evidence, as appropriate, must be issued indicating that the holder has attended a course of training in advanced fire fighting.

(4) Every person who is designated to control fire-fighting operations while serving on board a vessel must carry a Certificate or other evidence of having received training as required by this regulation.



**31.** (1) Every person designated to provide medical first aid on board a vessel must meet the standards of competence in medical first aid on board vessels specified in Section A-VI/4 of the Code.

Mandatory  
Minimum  
Requirements  
for Medical  
first aid

(2) Every person designated to take charge of medical care on board a vessel must meet the standard of competence specified in Section a-VI/4, subsections (4) - (6) of the Code.

(3) If training in medical first aid or medical care is not included in the qualifications for the Certificate of Competency to be issued, a special certificate or documented evidence, as appropriate, must be issued indicating that the holder has attended a course of training in medical first aid or in medical care.

(4) A candidate for a certificate under Regulation VI/4, paragraph 1 must provide evidence that the required standard of competence has been achieved in accordance with the methods for demonstrating competence and the criteria for evaluating competence tabulated in columns 3 and 4 of Table A-VI/4-1 of the STCW Code.

(5) Every person designated to provide medical first aid or take charge of medical care while serving on board the vessel must carry evidence of having received appropriate training in accordance with this regulation.

**32.** (1) Every vessel which carries a bulk cargo consisting in whole or in part of oil, liquid chemicals or liquefied gases, must carry personnel qualified in accordance with this regulation.

Mandatory  
Minimum  
Training for  
Seafarers on  
Tankers

(2) A person serving as master, chief mate, chief engineer, second engineer or any other officer with immediate responsibility for the loading, discharging, care in transit, or handling of the cargo in a vessel referred to in sub-regulation (1) must hold a certificate to confirm that the holder has received approved training in accordance with the requirements of Section A-VI/1, paragraph 9 to 14, 16 to 20, or 23 to 32 of the Code as appropriate for the type of cargo that is carried.

(3) A seafarer, other than one to whom sub-regulation (2) applies, who has specific duties and responsibilities relating to cargo equipment in tankers must either --

- (a) hold a certificate or licence with an endorsement indicating that it is valid for service in tankers of the appropriate type; or
- (b) have completed a shore-based fire-fighting course, and have –
  - (i) not less than 3 months sea service acceptable to the Director; and
  - (ii) successfully undertaken a shore-based tanker familiarisation course for tankers of the appropriate type within the 5 year period preceding the date of joining the vessel which is approved by a Party as meeting the requirements of either Chapter V, Regulation A-V/1, paragraphs 2 to 7 of the Code or, in the case of persons who commenced their training before August 1998, training which meets the requirements of Chapter V, Regulation V/1.1, V/2.1 or STCW 78; and
  - (iii) produce a certificate attesting to the training required by this regulation.

(4) A seafarer to whom sub-regulation (3) applies and who received appropriate training before 1st August 1998 in tanker familiarization in accordance with the provisions of STCW 78 is regarded as continuing to meet the requirements of sub-regulation (3) if he or she holds documented evidence of not less than 1 year's service in tankers of the same type within the preceding 5 years.

Mandatory  
Minimum  
Training for  
Seafarers on  
Ro-Ro  
Passenger  
Vessels

**33.** (1) Masters, officers, ratings and other persons serving on board Ro-Ro passenger vessels must, prior to being assigned shipboard duties, have completed the training specified in sub-regulations (3) to (7) in accordance with their capacity, duties and responsibilities.

(2) Persons who are required to be trained in accordance with sub-regulations (3), (6) and (7) must undertake refresher training at intervals not exceeding 5 years.

(3) Masters, officers and other persons designated on master lists to assist passengers in emergency situations on board Ro-Ro passenger vessels must have completed training in crowd management as specified in section A-A/2, Subsection 1 of the Code.

(4) Masters, officers and other persons assigned specific duties and responsibilities on board Ro-Ro passenger vessels must have completed the familiarization training specified in Section A-V/2, subsection 2 of the Code.

(5) Persons providing direct service to passengers in passenger spaces on board Ro-Ro passenger vessels must have completed the safety training specified in section A-V/2, subsection 3 of the Code.

(6) Masters, chief mates, chief engineer officers, second engineer officers and every person assigned immediate responsibility for embarking and disembarking passengers, loading, discharging or securing cargo, or closing hull openings on board Ro-Ro passenger vessels must have completed approved training in passenger safety, cargo safety and hull integrity as specified in section A-V/2, subsection 4 of the Code.

(7) Masters, chief mates, chief engineer officers, second engineer officers and every person having responsibility for the safety of passengers in emergency situations on board Ro-Ro passenger vessels must have completed approved training in crisis management and human behaviour as specified in section A-V/2, subsection 5 of the Code.

(8) The owner of a Ro-R20 passenger vessel must provide the Director with documented details of the system of additional familiarisation training that is implemented for the vessel for the Director's approval and for the records of the Administration.

34. Subject to regulation 61, the fees payable for receiving applications, assessing competence and issuing certificates under this Part are as provided for in Schedule 7.

Fees for  
certificates  
and assess-  
ments

Offences  
against this  
Part

**35.** (1) A person who makes a false declaration in order to obtain a Certificate or endorsement issued under this Part commits an offence and shall be liable upon conviction to a fine not exceeding 1,000 penalty units or to a term of imprisonment for up to 6 months, or both.

(2) A person who obtains or uses forged documents, or obtains documents by fraud, for the purpose of obtaining a Certificate or endorsement issued under this Part commits an offence and shall be liable upon conviction to a fine not exceeding 1,000 penalty units or to a term of imprisonment for up to 6 months, or both.

(3) A person who issues a false document or who forges a document to facilitate the issue of a Certificate or endorsement issued under this Part commits an offence and shall be liable upon conviction to a fine not exceeding 15,000 penalty units or to a term of imprisonment for up to 1 year, or both.

#### **PART 8 - MEDICAL STANDARDS**

Application of  
this Part

**36.** (1) The medical standards required for seafarers serving aboard vessels registered or licensed in Solomon Islands and for citizens of Solomon Islands who are employed aboard any vessel must meet the requirements of this Part, and such requirements apply to –

- (a) designated physicians responsible for assessing medical fitness;
- (b) persons responsible for the recruitment and employment of seafarers;
- (c) owners and masters of ships registered or licensed in Solomon Islands;
- (d) seafarers required by Part 6 to hold a certificate, and any other person serving aboard Solomon Islands vessels;
- (e) seafarers required by the Convention, STCW Regulations or Code to hold a certificate, and who are citizens of Solomon Islands serving on any ship; and

(f) persons required by the STCW Regulations to maintain registers and records pertaining to seafarers and their certificates.

(2) The vision and hearing requirements of these Regulations apply to seafarers who are employed in any capacity for which a certificate as master, master engineer or watchkeeper is required under Part 6.

**37.** (1) The standards of medical fitness to be applied to seafarers under these Regulations are as required by Regulation 1/9 of the Convention, and as set out in Schedule 8 to these Regulations. Standards of Medical Fitness

(2) Only designated physicians may conduct medical examinations and issue Medical Fitness Certificates to seafarers pursuant to Regulation 1/9 of the Convention, and under the authority of these Regulations.

(3) A list of designated physicians shall be maintained by the Administration and made available at the request of other Parties to the Convention, and owners of vessels to which these Regulations apply.

(4) Persons requiring the use of spectacles or contact lenses to perform their duties should have a spare pair of spectacles or contact lenses conveniently available aboard ship.

(5) Eyes of seafarers must be free of disease, and any permanent or progressive debilitating pathology without recovery should be the cause for the determination of unfitness.

(6) Information in respect of medical examinations must be provided to the Administration for inclusion in the register kept by the Director.

(7) A seafarer submitting to medical examination must declare any existing medical pre-condition or illness that might be a determinant of unfitness for duty.

**38.** (1) Medical examinations must be carried out in accordance with the requirements of these Regulations, and the provisions of the "Physicians Guide to STCW-95". Medical Fitness Certificates

(2) Each designated physician must set out in the Medical Fitness Examination Report, the physician's assessment of the seafarer's medical condition as either –

- (a) unfit for service at sea;
- (b) fit for service at sea, with limitations; or
- (c) fit for service at sea, without limitations

(3) A designated physician who assesses a seafarer as fit for service at sea with limitations must specify those limitations in the seafarer's Medical Fitness Certificate.

(4) A designated physician must, after completing the medical examination of a seafarer under these Regulations, issue a Medical Fitness Certificate.

Duration of  
Medical  
Fitness  
Certificate

**39.** (1) Except where a re-examination is required under regulation 40, and subject to sub-regulations (2) and (3), a Medical Fitness Certificate is valid from the time of issue –

- (a) in the case of a seafarer 40 years of age and over - for 2 years; and
- (b) in all other cases - for 3 years

(2) If appropriate, taking into account the state of health of the seafarer examined, a designated physician may issue a Medical Fitness Certificate that specifies a shorter period of validity than the period set out in sub-regulation (1).

(3) If the period of validity of a Medical Fitness Certificate expires in the course of a voyage, the certificate remains in force until the end of the voyage, or until the end of a further period 3 months, whichever occurs first.

Re-Examination

**40.** (1) The Director may at any time require the re-examination of a seafarer –

- (a) if the Director has reason to believe that a re-examination is desirable in order to protect the safety of a vessel or of other seafarers on board a vessel;

- (b) at the request of the seafarer's employer, if the employer has grounds to believe that the seafarer's state of health may constitute a risk to the safety of a vessel or of other seafarers on board a vessel; or
- (c) at the request of the seafarer.

(2) All re-examinations under this regulation shall be conducted as if it were an original examination under these Regulations.

**41.** (1) A seafarer may apply to the Director for a review by a designated physician of a Medical Fitness Certificate issued under this Part that indicates the seafarer is – Review of a  
Medical  
Fitness  
Certificate

- (a) unfit for service at sea; or
- (b) fit for service at sea with limitations

(2) A reviewing physician must be a designated physician.

(3) After conducting a review of a Medical Fitness Certificate, and of the state of health of the seafarer to whom it was issued, the reviewing physician may direct that a further medical examination be carried out, and may stipulate the type of examination to be carried out and the specialist physician or medical institution to carry it out.

(4) The reviewing physician may either –

- (a) confirm the Medical Fitness Certificate that was originally issued; or
- (b) where appropriate and based on further examinations conducted pursuant to sub-regulation (3), issue a new Medical Fitness Certificate.

Appeal of a  
Reviewed  
Medical  
Fitness  
Certificate

**42.** (1) A seafarer who has requested a review of a Medical Fitness Certificate, may appeal to the Director for a further review of the case by an Appeal Board, if the Medical Fitness Certificate confirmed or issued by the reviewing physician indicates that the seafarer is –

- (a) unfit for service at sea; or
- (b) fit for service at sea with limitations

(2) An application for a review by an Appeal Board must be accompanied by the appropriate fee.

(3) On receipt of a request from a seafarer pursuant to sub-regulation (1), the Director shall appoint an Appeal Board consisting of a senior officer of the Administration appointed by the Director and two other designated physicians.

(4) An Appeal Board may determine the manner in which it considers a review, and has the same power as a reviewing physician to either –

- (a) confirm the Medical Fitness Certificate issued or confirmed by the reviewing physician; or
- (b) where appropriate issue a new Medical Fitness Certificate.

(5) An Appeal Board shall record its decision (and the reasons for it) in writing, and send a copy of the decision to the Director, to the seafarer and to the employer of the seafarer.

(6) The Administration shall provide administrative support for an Appeal Board.

Costs of  
Medical  
Examinations  
conducted for  
Reviews and  
Appeals

**43.** The costs of any medical examination conducted as a result of a review under regulation 41 or an appeal under regulation 42 shall be borne by the applicant seafarer, in addition to the fee payable under these Regulations.

Medical  
Fitness  
Certificates  
Required

**44.** A seafarer employed on a vessel to which the Convention applies must hold a valid Medical Fitness Certificate if the seafarer –

- (a) is required to be on board by virtue of the vessel's Safe Manning Certificate;



- (b) has any responsibility on board relating to an emergency procedure;
- (c) has any watchkeeping responsibilities; or
- (d) has any duties relating to the normal operation of the vessel.

45. (1) An owner of a vessel who employs a person as a seafarer who has not produced to the owner or master of the vessel a valid Medical Fitness Certificate issued under this Part attesting to the seafarer's fitness to perform the duties for which the seafarer engaged on the voyage to be undertaken by the vessel commits an offence, and shall be liable upon conviction –

Offences  
against this  
Part

- (a) in the case of an individual - to a fine of up to 100 penalty units or to a term of imprisonment for up to 2 years, or both; or
- (b) in the case of a body corporate - to a fine not exceeding 500 penalty units.

(2) A person who accepts employment as a seafarer on board a vessel in a capacity for which a Medical Fitness Certificate is required under these Regulations and who does not hold a current and valid Medical Fitness Certificate issued under these Regulations commits an offence, and shall be liable upon conviction to a fine not exceeding 10 penalty units or to a term of imprisonment for up to 1 month, or both.

(3) A seafarer who fails to declare to a designated physician any existing medical condition or illness that might otherwise have led to a determination of unfitness for duty commits an offence, and shall be liable upon conviction to a fine not exceeding 10 penalty units or to a term of imprisonment for up to 1 month, or both.

#### PART 9 - QUALITY STANDARDS

46. (1) The provisions of this Part apply to activities carried out by all persons, agencies and entities involved in the provision of training programmes, the assessment of competencies, and the certification, endorsement and revalidation of certificates as provided for under the Convention.

Application  
of this Part

(2) All persons, agencies and entities to which this Part applies must continuously monitor their activities related to the implementation of the Convention by documenting and implementing approved quality standards system designed to ensure that the provision of training programmes, the assessment of competencies, and the certification, endorsement and revalidation of certificates are implemented in accordance with the Code.

Approved  
Quality  
Standards

**47.** (1) Quality standards and systems may be approved by the Administration for the purposes of this Part if they are in accordance with the guidelines set out in Section B-1/8 of the Code relating to the training, examination and assessment of seafarers.

(2) The Administration shall ensure that all quality standards and systems clearly identify the education and training objectives and related standards of competence, and the levels of understanding and the skills appropriate to the examinations and assessments required by the Convention prior to giving any approval under this regulation.

Independent  
Evaluations

**48.** (1) The Administration shall ensure that independent evaluations of the administration of the certification system, including assessments of the knowledge, understanding, skills and competence acquisition, and assessment activities, are undertaken at intervals of not less than 5 years in order to verify that –

- (a) all internal management control and monitoring measures, and the follow-up actions, comply with planned arrangements and documented procedures, and are effective in ensuring achievement of the defined objectives;
- (b) the results of each independent evaluation are documented and brought to the attention of those responsible for the area evaluated; and
- (c) timely action is taken to correct deficiencies.

(2) The Minister may appoint competent persons, who are not themselves involved in the activities concerned, to conduct independent evaluations in accordance with sub-regulation (1).

49. (1) All reports of evaluations undertaken in accordance with regulation 48 must be submitted to the Minister as soon as they are completed. Reporting Requirements

(2) Information relating to an evaluation under regulation 48 must be communicated by the Administration to the Secretary-General of IMO.

#### PART 10 - INVESTIGATIONS, SUSPENSIONS AND CANCELLATIONS

50. (1) The provisions of this Part must be applied to as to ensure that impartial marine investigations are carried in compliance with Regulation 1/5 of the Convention. Application of this Part

(2) The provisions of this Part apply to all holders of certificates issued or recognised by the Director in accordance with these Regulations and relating to –.

- (a) the proper performance of duties in accordance with the Regulations and as required by any certificate held under them;
- (b) the withdrawal, suspension and cancellation of certificates issued or recognised under these Regulations; and
- (c) the integrity of the systems of evaluation, assessment, examination and certification under these Regulations.

(3) For the purpose of this Part, unless the context otherwise requires, an “impartial investigation” means an investigation into any possible breach of these Regulation and any reported incompetence, act or omission that may pose a direct threat to safety of life or property at sea or to the marine environment.

51. Impartial investigations under this Part shall be conducted in accordance with section 85 of the Act, and the powers, procedures, rights and duties specified in section 85 of the Act shall apply to all investigations carried out for the purposes of this Part. Impartial Investigation

Powers of  
Impartial  
Investigation as  
to Certificates of  
Competency

52. (1) Where as a result of a recommendation made by a person conducting a preliminary investigation or a Marine Inquiry for the purposes of this Part, the Director is satisfied that a seafarer –

- (a) is unfit to discharge his or her duties because of incompetence or misconduct;
- (b) has acted or failed to act in a manner that is to be expected of that seafarer;
- (c) has been seriously negligent in the discharge of his or her duty; or
- (d) has failed to give any assistance or information required by any person lawfully undertaking a preliminary investigation or a Marine Inquiry.

the Director may –

- (i) take action, in accordance with section 97 of the Act to cancel or suspend for a specified period, any certificate of competency issued to the qualified seafarer; or
- (ii) censure the seafarer concerned.

(2) Persons conducting a preliminary investigation or Marine Inquiry shall not recommend the cancellation or suspension of the certificate of any master or qualified seafarer unless the rights and procedures prescribed in section 86(4) of the Act have been fully applied in all such cases.

(3) Any person who hinders or obstructs a preliminary investigation or Marine Inquiry conducted under this Part, or who fails to answer any question or to produce any document when required to do so during any such investigation or inquiry shall commit an offence against section 85(2) and (3) of the Act, and shall be liable to have his or her Certificates issued under these Regulations suspended or cancelled in accordance with this regulation.

53. (1) If the Director determines that a Certificate of Appeals Competency shall be –

- (a) suspended for a period exceeding 6 months, or
- (b) cancelled –

the holder of the Certificate may appeal to the High Court against the decision.

(2) All appeals made under this regulation must be filed within –

- (a) 30 days of the date on which notice of the Director's decision is given; or
- (b) such extended period as the Court, on application made either before or after the period of 30 days, referred to in paragraph (a), orders.

(3) When determining an appeal under sub-regulation (1) the Court may –

- (a) confirm the decision of the Director;
- (b) revoke the withdrawal, suspension or cancellation, as the case may be; or
- (c) vary the decision of the Director in such a manner as it considers appropriate.

(4) A decision of the Court under sub-regulation (3) shall be deemed to be a decision of the Director and shall be given effect accordingly.

54. A person conducting a preliminary investigation or Marine Inquiry Immunities under this part shall not be subject to any action, liability, claim or demand for any matter or thing done or omitted to be done in good faith in the performance of his or her duties under this Part.

## PART 11 - REQUIREMENTS APPLYING TO MARINE RADIO DUTIES

Application of this Part 55. The requirements for the Radio Regulations, the SOLAS Convention, and the Telecommunication Convention relating to the qualifications of radio personnel on ships must be complied with by –

- (a) all owners and masters of all ships registered or licensed in Solomon Islands; and
- (b) all radio personnel employed on those ships.

Application of the Radio Regulations 56. The Radio Regulations annexed to the most recent Telecommunications Convention, as in force at anytime are incorporated into and shall have the force of law in Solomon Islands.

Certification of Radio Personnel 57. (1) A seafarer in charge of or required to perform radio duties on a vessel which is required to participate in the GMDSS must hold an appropriate certificate related to the GMDSS, issued or recognised by the Director under the provisions of the Radio Regulations.

(2) An applicant for a certificate referred to in sub-regulation (1) for service on a ship which is required by SOLAS to have a radio installation, must –

- (a) be not less than 18 years of age; and
- (b) have completed approved education and training sufficient to meet the standard of competence specified in Section A-IV/2 of the Code.

(3) Radio personnel on vessels not required to comply with the provisions of GMDSS in Chapter IV of SOLAS are not required to meet the provisions of these Regulations, but they must comply with the Radio Regulations in the performance of their radio duties.

(4) The Director may issue or recognise certificates for radio personnel in accordance with the standards and requirements prescribed by the Radio Regulations.

58. (1) A seafarer in charge of or required to perform radio duties <sup>Radio</sup> operating with a GMDSS system must hold – <sub>Certificates</sub>

- (a) on vessels with a Cargo Ship Safety Radio Certificate or a Passenger Ship Safety Certificate valid for operation in area A1 only - at least a GMDSS Restrict Operations Certificate issued in accordance with Subsection D of Section III A of Article 55 of the Radio Regulations and Regulation IV/2 of STCW 95;
- (b) on vessels with a Cargo Ship Safety Radio Certificate or Passenger Ship Certificate valid for operations in area AI+A2, AI+A2+A3 and AI+A2+A3+A4 - at least a GMDSS General Operators Certificate issued in accordance with Subsection C of Section IIIA of Article 55 of the Radio Regulations and Regulation IV/2 of STCW 95; and
- (c) an endorsement to an appropriate certificate issued by a Party; which states that the holder is qualified to perform the radio-communication function at the operation level.

(2) Notwithstanding sub-regulation (1), vessels of 300 gross tonnage or more which operate with a GMDSS radio system in sea areas A2, A3 or A4 must carry either one first or one second class radio electronics officer qualified in accordance with sub-regulation (1), one of whom may be the master.

(3) Radio personnel on vessels not required to comply with the provisions of GMDSS as prescribed in Chapter IV of the SOLAS Convention must hold appropriate certificates in accordance with the Radio Regulations.

(4) Nothing in this regulation precludes the Director from varying the requirements for the number of radio personnel required to be carried, provided that those requirements comply with the Radio Regulations and the Convention.

Offences  
against this  
Part

59. (1) Any owner of a vessel who fails to comply with any obligation under this Part, or specified in the Convention, the STCW Regulations, the Code, or the Radio Regulations in respect of radio personnel on the vessel commits an offence and shall be liable upon conviction

(a) in the case of an individual - to a fine not exceeding 100 penalty units or a term of imprisonment for up to 2 years, or both; or

(b) in the case of a body corporate - to a fine not exceeding 500 penalty units.

(2) Any master of a vessel to which this Part applies who fails to comply with any obligation under this Part, or specified in the Convention, the STCW Regulations, the Code or the Radio Regulations in respect of radio personnel and their certification and duties commits an offence and shall be liable upon conviction to a fine not exceeding 100 penalty units or to a term of imprisonment for up to 1 year, or both.

(3) Any seafarer on a vessel to which this Part applies who is obliged to comply with any obligation under this Part, or specified in the Convention, the STCW Regulations, the Code or the Radio Regulations in relation to the operation of marine radio commits an offence and shall be liable upon conviction to a fine not exceeding 30 penalty units or to a term of imprisonment for up to 3 months, or both.

#### PART 12 - GENERAL PROVISIONS

Use of Forms

60. The forms in the Schedules represent standard forms to be used in the applicable circumstances but are not prescribed under these Regulations, and may be altered or replaced by the Director in the exercise of the powers stated in section 11 of the Maritime Safety Administration Act 2009.

Periodic  
review of Fees

61. (1) All fees prescribed under these Regulations shall increase by 5% per annum, and each increased fee shall be deemed to be imposed under these Regulations from the 1st January each year after the commencement of these Regulations.

(2) When fees are increased in accordance with sub-regulation (1), the Director may publish a list of revised fees to be displayed at the offices of the Administration and to be otherwise notified and circulated as the Director determines.



62. On the coming into force of these Regulations, the following provisions of the Shipping Regulations 1967 are repealed – Repeal and Transitional

- (a) part II (regulations 4 - 17 inclusive); and
- (b) Schedules A, B, C, D, I and J.

63. (1) Subject to sub-regulations (2) and (3), all certificates held by Solomon Islands seafarers which are current as at the commencement of these Regulations, and which have been issued under the authority of the Director or the Principal Shipping Officer, or otherwise under the authority of any maritime law, shall be deemed to be valid for the remainder of the term of their validity. Existing Certificates

(2) The Director may determine that any certificate saved under sub-regulation (1) be re-classified to an equivalent or similar class of certificate under these Regulations;

(3) The Director may require the holder of any certificate referred to in sub-regulation (1) to surrender his or her certificate and to be assessed for the issue of an appropriate certificate under this Regulations, or for a certificate to be re-validated subject to any requirements that the Director imposes.

(4) The Director may issue notice to the holders of any class of certificate referred to under sub-regulation (1) requiring any action determined by the Director as being necessary to achieve compliance with these Regulations, the Convention, the STCW Regulations and the Code.

(5) Without restricting the application of sub-regulations (3) and (4), the Director may determine that upgrading of any certificate referred to sub-regulation (1) is required by means of –

- (a) an approved revalidation or upgrading course held at the School of Marine and Fisheries Studies, or another approved institution; or
- (b) an approved period of sea-service on ships engaged on international voyages.

MADE AT HONIARA this seventeenth day of September, 2010.

JACKSON FIULACA  
Minister for Infrastructure Development

## SCHEDULE 1

(Regulation 4(4) and (5))

## APPLICATION OF STCW REGULATIONS

PART 1 - SERVICE CAPACITY AND STCW REGULATION  
ENDORSEMENT

SERVING CAPACITY, CERTIFICATES AND LIMITATIONS			STCW REGS
<b>Navigation</b>			
Master	Master Class 1	>3000 gross tons - unlimited	II/2.1
Master	Master Class 2	<3000 gross tons-unlimited	II/2.3
Master	Master Class 3/Watchkeeper	<3000 gross tons-unlimited	II/3.2 &II/1
Master	Master Class 4	<500 gross tons-near coastal	II/3.5
Master	Master Class 5	80 gross tons or less-territorial waters	-
Master	Master/Engineer Class 6	20 gross tons or less-territorial waters	-
Master	Master/Engineer Class 6 Restricted	20 gross tons or less-inshore waters	-
Master	Boat Master's Licence	20 gross tons or less-inshore waters	-
Chief Mate	Class 1 Chief Mate	>3000 gross tons	II/2.1
Chief Mate	Class 2 Chief Mate	500-3000 gross tons	II/2.3
Officer of the Watch	Deck Watchkeeper	>500 gross tons-unlimited	II/1
Officer of the Watch	Master Class 3	<500 gross tons-unlimited	II/3.1
Officer of the Watch	Master Class 5	<500 gross tons - near-coastal	II/3.3
Ratings forming part of a navigation watch	Deck Watchkeeping Rating	<500 gross tons-unlimited	II/4
<b>Engineering</b>			
Chief Engineer	Chief Engineer Class 1	>3000 kW-unlimited	III/2
Chief Engineer	Chief Engineer Class 2	750-3000 kW-unlimited	III/3
Chief Engineer	Engineer Class 3/Watchkeeper	<750 kW-unlimited	III/1
Engineer	Engineer Class 3	750 - 3000 kW - Near Coastal	-
Engineer	Engineer Class 4	<500 kW-Near Coastal	-
Engineer	Engineer Class 5	>250 kW-Territorial waters	-
Engineer	Master/Engineer Class 6	<20 gross tons-Territorial waters	-
Engineer	Master/Engineer Class 6 (Restricted)	20 gross tons or less-Inshore waters	-
Second Engineer	Second Engineer Class 1	>3000 Kw	III/2
Second Engineer	Second Engineer Class 2	750-300 kW	III/3
Officer of the Watch	Engineer Watchkeeper	>750 kW	III/1
Ratings forming part of an engineering watch	Engineer Watchkeeping Rating	>750 kW	III/4

<b>PART 2 - MANDATORY SHORT COURSES AND STCW REGULATION ENDORSEMENT</b>	
<b>MANDATORY SHORT COURSES</b>	<b>STCW REGULATION</b>
<b>Basic Safety Training - all new entrants</b> Familiarisation and basic safety training	VI/1
<b>(Safety Certificate)</b> Personal survival techniques	VI/1
Fire Prevention & Fire fighting	VI/2
Elementary first-aid	VI/3
Personal safety and social responsibilities (Occupational Health & Safety)	VI/4
<b>Survival</b> Proficiency in survival craft and rescue boats other than fast rescue boats	VI/2
Proficiency in fast rescue boats	VI/2
<b>Radio</b> Radio communication personnel	
GMDSS-General Operator's Certificate - (GOC)	IV/2
GMDSS-Restricted Operator's Certificate - (RCC)	IV/2
<b>Fire-fighting</b> Advanced fire-fighting	VI/3
<b>Medical</b> Medical first-aid	VI/4
Medical care	VI/4
<b>SPECIAL TRAINING REQUIREMENTS</b>	
<b>Tankers</b> Tanker familiarization	V/1
Advanced tanker safety	V/1
<b>Ro-Ro &amp; Passenger Ships</b> Crowd Management for passengers and Ro-Ro ships	V/2
Crisis Management for passenger and Ro-Ro ships	V/2

## SCHEDULE 2

(Regulation 15 (1))

## MANNING REQUIREMENTS AND CLASSES OF CERTIFICATES

1. The number of persons holding the requisite certificates for service on vessels to which these Regulations apply must be in accordance with the following Tables for the type of voyage.
2. The administration may impose additional operating limits on vessels operating on Inshore and Sheltered Waters.

**PART 1 - DECK CERTIFICATES - UNLIMITED VOYAGES**  
Minimum Qualification

SHIP GROSS TONNAGE	MASTER	CHIEF MATE (As required)	W/KEEPER (As required)	ADDITIONAL W/KEEPER (As required)	W/KEEPER RATINGS (As required)
>7000	Master Class 1	Master Class 1	Deck Watchkeeping Officer	Deck Watchkeeping Officer	Deck Watchkeeping Officer
7000- >3000	Master Class 1	Master Class 1	Deck Watchkeeping Officer	Deck Watchkeeping Officer	Deck Watchkeeping Officer
3000- >1600	Master Class 2	Master Class 2	Deck Watchkeeping Officer	Deck Watchkeeping Officer	Deck Watchkeeping Officer
1600- >500	Master Class 2	Master Class 2	Deck Watchkeeping Officer	Deck Watchkeeping Officer	Deck Watchkeeping Officer
500->80	Master Class 3 + (Endorsed)	Master Class 3 + (Endorsed)	Deck Watchkeeping Officer		Deck Watchkeeping Officer
80->20	Master Class 3 + (Endorsed)	Master Class 3 + (Endorsed)	Master Class 3		Deck Watchkeeping Officer
20 or less	Master Class 3 + (Endorsed)	Master Class 3			

**Key:** > More than  
< Less than

**Note:** Master Class 3 + (Endorsed) = Master Class 3 and Watchkeeper Deck endorsement - for issue of and endorsement to serve in this capacity the person must meet the sea service requirements specified in STCW 95 appropriate to the certificate and provide documentary evidence of watchkeeping experience.

## PART 2 - DECK CERTIFICATES - NEAR-COASTAL VOYAGES

## Minimum Qualification

SHIP GROSS TONNAGE (Gross Tons)	MASTER	CHIEF MATE (As required)	W/KEEPER (As required)	ADDITIONAL W/KEEPER (As required)	W/KEEPER RATINGS (As required)
>7000	Master Class 1	Mate Class 1	Deck Watchkeeping Officer	Deck Watchkeeping Officer	Deck Watchkeeping Rating
7000- >3000	Master Class 2	Mate Class 2	Deck Watchkeeping Officer	Deck Watchkeeping Officer	Deck Watchkeeping Rating
3000- >1600	Master Class 2	Master Class 3	Master Class 4	Deck Watchkeeping Officer	Deck Watchkeeping Rating
1600- >500	Master Class 3	Master Class 4	Master Class 5	Deck Watchkeeping Officer	Deck Watchkeeping Rating
500->80	Master Class 3	Master Class 4	Master Class 5		Deck Watchkeeping Rating
80->20	Master Class 4 or Master Class 5 ++ (Endorsed)	Master Class 5	Master Class 5		Deck Watchkeeping Rating
20 or less	Master Class 5 ++ (Endorsed)	Master Class 5			Deck Watchkeeping Rating

**Key:** > More than  
< Less than

**Note:** Master Class 3 + (Endorsed) = Master Class 3 & Watchkeeper Deck endorsement - for issue of an endorsement to serve in this capacity the person must meet the sea service requirements specified in STCW 95 appropriate to that certificate and provide documentary evidence of watchkeeping experience.

Master Class 5 ++ (Endorsed) = Master Class 5 endorsed for operations in near-coastal waters on successful completion of the Master Class 4 assessment in Navigation & Position Determination - for issue of an endorsement to serve in this capacity the person must meet the sea service requirements specified in STCW 95 appropriate to that certificate and provide documentary evidence of watchkeeping experience.

## PART 3 - DECK CERTIFICATES - TERRITORIAL WATERS VOYAGES

## Minimum Qualification

SHIP'S GROSS TONNAGE (Gross Tons)	MASTER	CHIEF MATE (As required)	W/KEEPER (As required)	ADDITIONAL W/KEEPER (As required)	W/KEEPER RATINGS (As required)
>7000	Master Class 1	Mate Class 1	Deck Watchkeeping Officer	Deck Watchkeeping Officer	Deck Watchkeeping Rating
7000- >3000	Master Class 2	Mate Class 2	Deck Watchkeeping Officer	Deck Watchkeeping Officer	Deck Watchkeeping Rating
3000- >1600	Master Class 3	Master Class 3	Master Class 4	Deck Watchkeeping Officer	Deck Watchkeeping Rating
1600- >500	Master Class 3	Master Class 4	Master Class 5	Deck Watchkeeping Officer	Deck Watchkeeping Rating
500->80	Master Class 4	Master Class 4	Master Class 5		Deck Watchkeeping Rating
80->20	Master Class 5	Master Class 5			Deck Watchkeeping Rating
20 or less (15m open boat or less)	Master /Engineer Class 6	Master Class 5			Deck Watchkeeping Rating

**Key:** > More than  
< Less than

**Note:** Master Class 3 + (Endorsed) = Master Class 3 and Watchkeeper Deck endorsement - for issue of an endorsement to serve in this capacity the person must meet the sea service requirements specified in STCW 95 appropriate to that certificate and provide documentary evidence of watchkeeping experience.

**PART 4 - DECK CERTIFICATES - INSHORE VOYAGES**

## Minimum Qualification

SHIP'S GROSS TONNAGE (Gross Tons)	MASTER	CHIEF MATE (As required)	W/KEEPER (As required)	ADDITIONAL W/KEEPER (As required)	W/KEEPER RATINGS (As required)
>7000	Master Class 1	Mate Class 2	Deck Watchkeeping Officer	Deck Watchkeeping Officer	Deck Watchkeeping Rating
7000- >3000	Master Class 2	Mate Class 3	Deck Watchkeeping Officer	Deck Watchkeeping Officer	Deck Watchkeeping Rating
3000- >1600	Master Class 3	Master Class 4	Master Class 4	Deck Watchkeeping Officer	Deck Watchkeeping Rating
1600- >500	Master Class 4	Master Class 4	Master Class 5	Deck Watchkeeping Officer	Deck Watchkeeping Rating
500->80	Master Class 4	Master Class 5	Master Class 5		Deck Watchkeeping Rating
80->20	Master Class 5	Master Class 6			Deck Watchkeeping Rating
20 or less (15m open boat or fess)	Restricted Master /Engineer Class 6				Deck Watchkeeping Rating

**Key:** > More than  
< Less than

**Note:** The Administration may impose additional operating limits on vessels operating on Inshore Waters.

**PART 5 - DECK CERTIFICATE - SHELTERED WATERS**

## Minimum Qualification

SIZE - Small Boat	MASTER
20 GT or less OR (15, open boat or less)	Boat Master's Licence

**Note:** The Administration may impose additional operating limits on vessels operating on Sheltered Waters.

**PART 6 - FISHING CERTIFICATES - FISHING VESSELS ON  
UNLIMITED VOYAGES**

Minimum Qualification

SHIP'S GROSS TONNAGE (GT) or (Length)	MASTER	CHIEF MATE (As required)	W/KEEPER (As required)	ADDITIONAL W/KEEPER (As required)	W/KEEPER DECKHANDS (As required)
1600->500 GT (75->60m)	Deep Sea Skipper or Master Class 3	Deep Sea Mate or Watchkeeper	Master Class 3 (F)		2 Holding PIQFD. All others to hold Safety Certificate

**Key:** >more than  
<less than

**Note:** Master Class 3 + (Endorsed) = Master Class 3 and Watchkeeper Deck endorsement - for issue of an endorsement to serve in this capacity the person must meet the sea service requirements specified in STCW 95 appropriate to that certificate and provide documentary evidence of watchkeeping experience.

**PART 7 - FISHING CERTIFICATES - FISHING VESSELS ON  
NEAR-COASTAL VOYAGES**

Minimum Qualification

SHIP'S GROSS TONNAGE (Gross Tons)	MASTER	CHIEF MATE (As required)	W/KEEPER (As required)	ADDITIONAL W/KEEPER (As required)	W/KEEPER DECKHANDS (As required)
1600->500 GT (75->60M)	Master Class 3 (F)	Master Class 5 (F)	Master Class 5 (F)		2 Holding PIQFD, all others to hold Safety Certificate
500->80 (60->25m)		Master Class 5 (F)	Master Class 5 (F)		All to hold Safety Certificate
80->20 (25->15m)	Master Class 4 (F)	Master Class 5 (F)			All to hold Safety Certificate
20 GT or less (15 metres or Less)	Master/Engineer Class 6 (F)	Master/Engineer Class 6 (F)			All to hold Safety Certificate

**Key:** >more than  
<less than



**PART 8 - FISHING CERTIFICATES - FISHING VESSELS ON  
TERRITORIAL WATERS VOYAGES**

Minimum Qualification

SHIP'S GROSS TONNAGE (Gross Tons)	MASTER	CHIEF MATE (As required)	W/KEEPER (As required)	ADDITIONAL W/KEEPER (As required)	W/KEEPER DECKHANDS (As required)
1600->500 GT (75->60M)	Master Class 3 (F)	Master Class 5 (F)	Master Class 5 (F)		2 Holding PIQFD, all others to hold Safety Certificate
500->80 (60->25m)	Master Class 4 (F)	Master Class 5 (F)	Master Class 5 (F)		All to hold Safety Certificate
80->20 (25->15m)	Master Class 5 (F)	Master Class 5 (F)			All to hold Safety Certificate
20 GT or less (15 metres or Less)	Master/Engineer Class 6 (F)	Master/Engineer Class 6 (F)			All to hold Safety Certificate

**Key:** >more than  
<less than

**Note:** The Administration may apply restrictions to the areas of operation for vessels below 20GT/15m

**PART 9 - FISHING CERTIFICATES - FISHING VESSELS ON  
INSHORE VOYAGES**

Minimum Qualification

SHIP'S GROSS TONNAGE (Gross Tons)	MASTER	CHIEF MATE (As required)	W/KEEPER (As required)	ADDITIONAL W/KEEPER (As required)	W/KEEPER DECKHANDS (As required)
1600->500 GT (75->60M)	Master Class 4 (F)	Master Class 4 (F)	Master Class 5 (F)		Deck Watchkeeping Rating
500->80 (25-60m)	Master Class 5 (F)	Master Class 5 (F)			Deck Watchkeeping Rating
80->20 (15-25m)	Master Class 5 (F)	Master/Engineer Class 6 (F)			Deck Watchkeeping Rating
20 GT or less (15 metres or Less)	Restricted Engineer Class 6 (F)				Deck Watchkeeping Rating

**Key:** >more than  
<less than

**Note:** The Administration may impose additional operating limits on vessels operating on Inshore and Sheltered Waters.

**PART 10 - ENGINEERING CERTIFICATES -  
UNLIMITED VOYAGES**  
Minimum Qualification

ENGINE POWER (kilowatts)	CHIEF ENGINEER	SECOND ENGINEER (As required)	W/KEEPER (As required)	ADDITIONAL W/KEEPER (As required)	W/KEEPER RATINGS (As required)
>6000 kW	Engineer Class 1	2nd Engineer Class 1	Engineer Watchkeeper	Engineer Watchkeeper	Engine Watchkeeping Rating
6000- >3000	Engineer Class 1	2nd Engineer Class 1	Engineer Watchkeeper	Engineer Watchkeeper	Engine Watchkeeping Rating
3000- >1500	Engineer Class 2	2nd Engineer Class 2	Engineer Watchkeeper	Engineer Watchkeeper	Engine Watchkeeping Rating
1500- >750	Engineer Class 2	2nd Engineer Class 2	Engineer Watchkeeper	Engineer Class 3	Engine Watchkeeping Rating
750- >500	Engineer Class 3 *(Endorsed)	Engineer Class 3 *(Endorsed)	Engineer Class 3		Engine Watchkeeping Rating
500- >250	Engineer Class 3 *(Endorsed)	Engineer Class 3	Engineer Class 3		Engine Watchkeeping Rating
250 or less	Engineer Class 3 *(Endorsed)	Engineer Class 3			Engine Watchkeeping Rating

**Key:** >more than  
<less than

**Note:** Engineer Class 3 \*(Endorsed) = Engineer Class 3 and Watchkeeper  
Engineer endorsement - for issue of an endorsement to serve in this capacity the person must meet the sea service requirements specified in STCW 95 appropriate to that certificate and provide documentary evidence of watchkeeping experience.

**PART 11 - ENGINEERING CERTIFICATES - NEAR COASTAL VOYAGES**  
Minimum Qualification

ENGINE POWER (kilowatts)	CHIEF ENGINEER	SECOND ENGINEER (As required)	W/KEEPER (As required)	ADDITIONAL W/KEEPER (As required)	W/KEEPER RATINGS (As required)
>6000 kW	Engineer Class 1	Engineer Class 2	Engineer Class 3 *(Endorsed)	Engineer Watchkeeper	Engine Watchkeeping Rating
6000- >3000	Engineer Class 2	Engineer Class 3 *(Endorsed)	Engineer Class 3 *(Endorsed)	Engineer Watchkeeper	Engine Watchkeeping Rating
3000- >1500	Engineer Class 3 *(Endorsed)	2nd Engineer Class 3	Engineer Class 3		Engine Watchkeeping Rating
1500- >750	Engineer Class 3	2nd Engineer Class 3			Engine Watchkeeping Rating
750- >500	Engineer Class 4	Engineer Class 4			Engine Watchkeeping Rating
500- >250	Engineer Class 4	Engineer Class 5			Engine Watchkeeping Rating
250 or less	Engineer Class 5				Engine Watchkeeping Rating

**Key:** >more than  
<less than

**Note:** Engineer Class 3 \*(Endorsed) = Engineer Class 3 and Watchkeeper Engineer endorsement - for issue of an endorsement to serve in this capacity the person must meet the sea service requirements specified in STCW 95 appropriate to that certificate and provide documentary evidence of watchkeeping experience.

**PART 12 - ENGINEERING CERTIFICATES - TERRITORIAL  
WATERS VOYAGES**  
Minimum Qualification

ENGINE POWER (kilowatts)	CHIEF ENGINEER	SECOND ENGINEER (As required)	W/KEEPER (As required)	ADDITIONAL W/KEEPER (As required)	W/KEEPER RATINGS (As required)
>6000 kW	Engineer Class 1	Engineer Class 2	Engineer Class 3	Engineer Watchkeeper	Engine Watchkeeping Rating
6000- >3000	Engineer Class 2	Engineer Class 3	Engineer Class 3	Engineer Watchkeeper	Engine Watchkeeping Rating
3000- >1500	Engineer Class 3	Engineer Class 3			Engine Watchkeeping Rating
1500- >750	Engineer Class 3	Engineer Class 4			Engine Watchkeeping Rating
750- >500	Engineer Class 4	Engineer Class 5			Engineer Watchkeeping Rating
500- >250	Engineer Class 5	Engineer Class 5			Engineer Watchkeeping Rating
250 or less	Engineer Class 5				Engineer Watchkeeping Rating
20 GT or less	Master/ Engineer Class 6				Engineer Watchkeeping Rating

**Key:** >more than  
<less than

**PART 13 - ENGINEERING CERTIFICATES - INSHORE VOYAGES**  
Minimum Qualification

ENGINE POWER (kilowatts)	CHIEF ENGINEER	SECOND ENGINEER (As required)	W/KEEPER (As required)	ADDITIONAL W/KEEPER (As required)	W/KEEPER RATINGS (As required)
>6000 kW	Engineer Class 1	Engineer Class 2			Engine Watchkeeping Rating
6000- >3000	Engineer Class 2	Engineer Class 3			Engine Watchkeeping Rating
3000- >1500	Engineer Class 3	Engineer Class 4			Engine Watchkeeping Rating
1500- >750	Engineer Class 4	Engineer Class 4			Engine Watchkeeping Rating
750- >500	Engineer Class 4	Engineer Class 5			Engine Watchkeeping Rating
500- >250	Engineer Class 5				Engine Watchkeeping Rating
250 or less	Master/ Engineer Class 6				Engine Watchkeeping Rating
20 GT or less	Restricted Master/ Engineer Class 6				

**Key:** >more than  
<less than

**Note:** The Administration may impose additional operating limits on vessels operating on Inshore and Sheltered Waters.

## SCHEDULE 3

(Regulation 15(2))

NUMBER OF CERTIFICATES OF PROFICIENCY -  
PASSENGER VESSELS

TYPE AND CHARACTERISTICS OF SURVIVAL CRAFT OR SYSTEM	QUALIFIED PERSONS
Lifeboat boarded at the stowed position and capable of being released and lowered from inside	2 per boat
Lifeboat, boarded at stowed position and capable of being lowered from inside after being released	2 persons plus 1 for every two boats
Lifeboat, both released and lowered from the vessel	3 per boat
Liferaft	1 per liferaft
Davit-launched Liferaft	1 per liferaft, plus 1 for each davit
Marine escape system	4 per system, plus 1 for each raft associated with each system

## SCHEDULE 4

(Regulations 15(5) and 60)

## SAFE MANNING CERTIFICATE

Solomon Islands Maritime Safety Administration  
SAFE MANNING CERTIFICATE  
SHIPPING (STCW CONVENTION) REGULATIONS 2010

Solomon Islands Maritime Safety Administration  
G.P.O. Box G32  
Honiara  
Solomon Islands

Tel: (677) 21535 or 22056  
Fax No: (677) 23798  
E-Mail:

Name and Call Sign of Vessel:	
Official/IMO Number:	
Vessel Type/Class:	
Port of Registry:	
Trading Area:	
Gross Tonnage:	
Total Propulsion Power:	
Length Overall:	
Owner & Address:	

The above named vessel is safety manned for the type of operation described below in accordance with the Shipping Act 1998 and Shipping (STCW Convention) Regulations 2010, and with the STCW 1995 95 Convention, Regulations and Code.

POSITION	QUALIFICATION AND NUMBER				
	unlimited waters	Near Coastal Waters	Territorial Waters	Inshore waters	Sheltered waters
Master					
Chief Watchkeeper					
Extra Deck w/keeper					
Radio Personnel					
Chief Engineer					
Second Engineer					
Engineer Watchkeeper					
Extra Eng Watchkeeper					
Deck Watch Rating					
Engine Watch Rating					
Qualified Cook					
TOTAL CREW					
MAX PASSENGERS					

[Delete as required]

## Conditions and Limitations:

1. All crew members must meet the requirements regarding safety training and qualifications according to Regulations in force.
2. This Certificate is valid for 2 years. It will be renewed as long as there is not material change in safety equipment, or the construction of the ship, or in its passenger or cargo carrying capacity or its commercial purpose.

Signed .....

Director - SIMSA

Date / /

[Official Seal]

Name:

**SCHEDULE 5**

(Regulations 2(1), 17(1), 18(4) and 19(3))

**PART 1 - CLASSES OF CERTIFICATES AND THE  
PRE-REQUISITES FOR THEIR ISSUE**

## 1. General

A Candidate for Certification must provide satisfactory proof –

- (a) of his or her identity;
- (b) that his or her age is not less than that prescribed in the Schedule relevant to the Certificate applied for;
- (c) that he or she meets the prescribed standards of medical fitness, particularly regarding eyesight and hearing, and holds a valid document attesting to his or her medical fitness, issued by a designated physician;
- (d) that he or she has completed the seagoing service and any related compulsory training required by the Regulations for the certificate applied for;
- (e) that he or she meets the standards of competence prescribed by this Schedule for the capacities, functions and levels that are to be specified in the endorsement to the certificate.

Course modules are valid for 5 years from the date of commencement to the date of passing the modules.

A period of required sea service following the completion of a module may be undertaken within a period of 5 years from the commencement of the module. The Director may extend the period of validity of a module for an additional 12 month period if the candidate for certification establishes that he or she has been unable to obtain access to a vessel for the required sea service after making reasonable attempts to do so.

Where remission may be granted under the following requirements in relation to required sea service by the attendance at an approved training course, such remission cannot be granted for more than one-half of the period of required sea service.

## 2. Requirements for Minimum Age and Sea Service

**DECK CERTIFICATES****MASTER CLASS 1**

Minimum Age: Not prescribed

Prerequisite Certificate:

Mate Class 1, Master Class 2 and meet the requirement for certification of an officer in charge of a navigational watch of ships not less than 500 gross tonnage and have approved seagoing service in that capacity.



**Required Sea Service:**

Either:

- (a) none, but candidate must hold a Master Class 2 certificate of competency; or
- (b) 36 months approved seagoing service in charge of a navigation watch on ships 500 gross tonnage or over while holding a certificate of competency not lower than Deck Watchkeeper; or
- (c) 24 months approved seagoing service whilst holding a certificate of competency as Master Class 1. This period may be reduced to 12 months provided 12 months of seagoing service has been served as Chief Mate; and
- (d) in the case of (a), (b) or (c) at least 12 months must have been served on trading ships of 3000 gross tonnage or over

**Course of Study:**

Must have satisfactorily completed an appropriate course of study that at least meets the standards specified in Table A-II/2 of the Code and includes management training and knowledge of International Safety Management Code and includes practical training in ARPA, radar and electronic navigation.

Must hold the following current Certificates:

- (a) Valid certificate of medical fitness for service in the deck department;
- (b) Certificate of proficiency in survival craft and rescue boats other than fast rescue boats. Section A-VI/2 of the Code;
- (c) First Aid at Sea. Section A-VI/4-1 of the Code;
- (d) Advanced Fire Fighting and Control. Section A-VI/3 of the Code;
- (e) Occupational Health and Safety. Section A-VI/1-4 of the Code;
- (f) GMDSS General operator's Certificate

**Examination:**

Must have passed a written, oral and practical examination in appropriate operational knowledge conducted by an approved Examiner.

**MATE CLASS 1**

**Minimum Age:** Note prescribed.

**Prerequisite Certificate:** Mate Class 2 or Deck Watchkeeper-Deck

**Required Sea Service:**

12 months approved seagoing service in charge of a navigation watch on a vessel of 500 gross tonnage or over whilst holding a certificate of competency not lower than Deck Watchkeeper.

**Course of Study:**

Must have satisfactorily completed an appropriate course of study that at least meets the standards specified in Table A-II/2 of the Code and includes management training and knowledge of the International Safety Management Code and includes practical ARPA, radar and electronic navigation;

**Must hold the following current Certificates:**

- (a) Valid certificate of medical fitness for service in the deck department;
- (b) Certificate of proficiency in survival craft and rescue boats other than fast rescue boats. Section A-VI/2 of the Code;
- (c) First Aid at Sea. Section A-VI/4-1 of the Code;
- (d) Advanced Fire Fighting and Control. Section A-VI/3 of the Code;
- (e) Occupational Health and Safety. Section A-VI/1-4 of the Code;
- (f) GMDSS General Operator's Certificate

**Examination**

Must have passed a written, practical and oral examination in appropriate operational knowledge conducted by an approved Examiner.

**MASTER CLASS 2**

**Minimum Age:** Not prescribed.

**Prerequisite Certificate:** Mate Class 1, Mate Class 2 or Deck Watchkeeper

**Required Sea Service:**

Either:

- (a) 36 months approved seagoing service in charge of a navigation watch on ships of 500 gross tonnage or over while holding a certificate of competency not lower than Deck Watchkeeper; or
- (b) 24 months approved seagoing service on ships of 500 gross tonnage whilst holding a certificate of competency as Mate Class 1 or Mate Class 2. The period may be reduced to 12 months provided 12 months of seagoing service has been served as Chief Mate.

**Course of Study:**

Must have satisfactorily completed an appropriate course of study that at least meets the standards specified in Table A-II/2 of the Code and includes management training and knowledge of the International Safety Management Code and includes practical training in ARPA, radar and electronic navigation;

**Must hold following current Certificate:**

- (a) Valid certificate of medical fitness for service in the deck department;
- (b) Certificate of proficiency in survival craft and rescue boats other than fast rescue boats. Section A-VI/2 of the Code;
- (c) First Aid at Sea. Section A-VI/4-1 of the Code;
- (d) Advanced Fire Fighting and Control Section A-VI/3 of the Code;
- (e) Occupational Health and Safety. Section A-VI/1-4 of the Code;
- (f) GMDSS General Operator's Certificate-Section A-IV/2 of the Code.

**Examination:**

Must have passed on oral examination in operational knowledge conducted by an approved Examiner.

**MATE CLASS 2**

**Minimum Age:** Not prescribed

**Prerequisite Certificate:** Deck Watchkeeper

**Required Sea Service:**

12 months approved seagoing service in charge of a navigation watch on ships 500 gross tonnage or over while holding a certificate of competency not lower than Deck Watchkeeper.

**Course of Study:**

Must have satisfactorily completed an appropriate course of study that at least meets the standards specified in Table A-II/2 of the Code and includes management training and knowledge of the International Safety Management Code and includes practical training in ARPA, radar and electronic navigation.

**Must hold the following current Certificates:**

- (a) Valid certificate of medical fitness for service in the deck department;
- (b) Certificate of proficiency in survival craft and rescue boats other than fast rescue boats. Section A-VI/4-1 of the Code;
- (c) First Aid at Sea. Section A-VI/4-1 of the Code;
- (d) Advanced Fire Fighting and Control. Section A-VI/3 of the Code;
- (e) Occupational Health and Safety. Section A-VI/1-4 of the Code;
- (f) GMDSS General Operator's Certificate

**Examination:**

Must have passed a written, practical and oral examination in appropriate operational knowledge conducted by an approved Examiner.

**DECK WATCHKEEPER**

[Note: A Master Class 3 may gain cross credit to Deck Watchkeeper]

**Minimum Age:** 18 years

**Prerequisite Certificate:** Not prescribed

**Required Sea Service:**

Either:

- (a) 35 months approved service; or
- (b) have approved seagoing service of not less than one year as part of an approved training programme which includes on-board training which meets the requirements of section A-II/1 of the Code and is documented in an approved training record book. During the approved seagoing service, the candidate should have performed bridge watchkeeping duties under the supervision of a master or qualified officer for a period of not less than six months.

For either (a) or (b), not less than 6 months of seagoing service must be performed in vessels of more than 500 gross tonnage on Unlimited voyages.

**Course of Study:**

Must have satisfactorily completed an appropriate course of study that at least meets the standards specified in Table A-II/1 of the Code and includes practical training in ARPA, radar and electronic navigation.

**Must hold the following current Certificates:**

- (a) Valid certificate of medical fitness for service in the deck department;
- (b) Certificate of proficiency in survival craft and rescue boats other than fast rescue boats. Section A-VI/4-1 of the Code;
- (c) First Aid at Sea. Section A-VI/4-1 of the Code;
- (d) Advanced Fire Fighting and Control. Section A-VI/3 of the Code;
- (e) Occupational Health and Safety. Section A-VI/1-4 of the Code;
- (f) GMDSS General Operator's Certificate

**Examination:**

Must have passed a written practical and an oral examination in appropriate operational knowledge conducted by a approved Examiner.

**MASTER CLASS 3**

[Note: a Master Class 3 may gain cross credit to a Deck Watchkeeper, but must have completed at least 6 months approved seagoing service on ships of more than 500 gross tonnage which includes onboard training documented in an approved training records book.]

**Minimum Age:** Not prescribed

**Prerequisite Certificate:** Master Class 4

**Required Sea Service:**

12 months approved seagoing service as a watchkeeping officer whilst holding a Certificate of Competency not lower than a Master Class 4.

Not less than 6 months of seagoing service must be performed on vessels of more than 500 Gross tonnage.

Remission of seagoing service may be allowed for attendance at approved training courses.

This service may be performed either in or out of the Near-coastal Trading Area.

**Course of Study:**

Must have satisfactorily completed an appropriate course of study that at least meets the standards specified in Section A-II/3 of the Code for masters on ships engaged in Near-coastal voyages.

Must hold the following current Certificates:

- (a) Valid certificate of medical fitness for service in the deck department;
- (b) Certificate of proficiency in survival craft and rescue boats other than fast rescue boats. Section A-VI/2 of the Code;
- (c) First Aid at Sea. Section A-VI/4-1 of the Code;
- (d) Advanced Fire Fighting and Control. Section A-VI/3 of the Code;
- (e) Occupational Health and Safety. Section A-VI/1-4 of the Code;
- (f) GMDSS General Operator's Certificate

**Examination:**

Must have passed a written, practical and an oral examination in appropriate operational knowledge conducted by an approved Examiner.

**MASTER CLASS 4**

**Minimum Age:** 20 years

**Prerequisite Certificate:** Master Class 5

**Required Sea Service:**

12 months approved seagoing service as a watchkeeping officer holding a Certificate of Competency not lower than a Master Class 5.

Remission of seagoing service may be allowed for attendance at approved training courses. This service may be performed either in or out of the Near-coastal Training Area.

**Course of Study:**

Must have satisfactorily completed an appropriate course of study that at least meets the standards specified in Section A-II/3 of the Code for masters on ships engaged in Near-coastal voyages.

**Must hold the following current Certificates:**

- (a) Valid certificate of medical fitness for service in the deck department;
- (b) Certificate of proficiency in survival craft and rescue boats other than fast rescue boats. Section A-VI/2 of the Code;
- (c) First Aid at Sea. Section A-VI/4-1 of the Code;
- (d) Advanced Fire Fighting and Control. Section A-VI/3 of the Code;
- (f) GMDSS General Operator's Certificate

**Examination:**

Must have passed a written, practical and an oral examination in appropriate operational knowledge conducted by an approved Examiner.

**MASTER CLASS 5**

**Minimum Age:** 18 years

**Prerequisite Certificate:** Safety Certificate

**Required Sea Service:**

Either

- (a) 30 months approved seagoing service whilst holding a Certificate of Competency not lower than a Safety Certificate; or
- (b) 18 months approved seagoing service whilst holding a Certificate of Competency not lower than Master/Engineer Class 6; or
- (c) 18 months approved seagoing service whilst holding a Certificate of Competency not lower than Watchkeeping Rating.

Remission of seagoing service may be allowed for attendance at approved training courses. This service may be performed either in or out of the Near-coastal Training Area.

**Course of Study:**

Must have satisfactorily completed an appropriate course of study that at least meets the standards specified in Section A-II/3 of the Code for officers in charge of navigational watch on ships engaged in Near-coastal voyages.

**Hold the following current Certificates:**

- (a) Valid certificate of medical fitness for service in the deck department;
- (b) Certificate of proficiency in survival craft and rescue boats other than fast rescue boats. Section A-VI/2 of the Code;
- (c) First Aid at Sea. Section A-VI/4-1 of the Code;
- (d) Advanced Fire Fighting and Control. Section A-VI/3 of the Code;
- (e) Occupational Health and Safety. Section A-VI/1-4 of the Code;
- (f) GMDSS Restricted Operators Certificate

**Examination:**

Must have passed a written, practical and an oral examination in appropriate operational knowledge conducted by an approved Examiner.

**MASTER/ENGINEER CLASS 6**

**Minimum Age:** 18 years

**Prerequisite Certificate:** Safety Certificate

**Required Sea Service:**

12 months approved sea service whilst holding a Safety Certificate

**Course of Study:**

Must have satisfactorily completed an appropriate course of study that at least meets the standards specified in the Maritime Safety Administration module Courses.

**Must hold the following current Certificates:**

- (a) Valid certificate of medical fitness for service in the deck department;
- (b) Survival techniques Section A-VI/1-1 of the Code;
- (c) Basic First Aid at Sea. Section A-VI/1-3 of the Code;
- (d) Fire Prevention and Firefighting. Section A-VI/1-2 of the Code;
- (e) Occupational Health and Safety. Section A-VI/1-4 of the Code;
- (f) GMDSS Restricted Operators Certificate

**Examination:**

Must have passed a written, practical and an oral examination in appropriate operational knowledge conducted by an approved Examiner.

**RESTRICTED MASTER/ENGINEER CLASS 6**

**Minimum Age:** 18 years

**Prerequisite Certificate:** Basic Sea Safety Certificate

**Required Sea Service:**

6 months approved sea service whilst holding a Basic Sea Safety Certificate

**Course of Study:**

Must have satisfactorily completed an appropriate course of study that at least meets the standards specified in the Secretarial of the Pacific Community module Courses.

**Must hold the following current Certificates:**

- (a) Valid certificate of medical fitness for service in the deck department;
- (b) Basic Sea Safety Certificate

**Examination:**

Must have passed a written/practical and an oral examination in appropriate operational knowledge conducted by an approved Examiner.

**DECK WATCHKEEPING RATING**

**Minimum Age:** 16 years

**Prerequisite Certificate:** Safety Certificate

**Required Sea Service:**

12 months approved seagoing service, although the Director may allow remission of seagoing service 6 months for attendance at approved training programmes.

**Course of Study:**


---

Must have satisfactorily completed an appropriate course of study that at least meets the standards specified in Section A-II/4 of the Code for ratings forming part of a navigational watch.

---



**Must hold the following current Certificates:**

- (a) Valid certificate of medical fitness for service in the deck department;
- (b) Survival techniques. Section A-VI/1-1 of the Code;
- (c) Basic First Aid at Sea. Section A-VI/1-3 of the Code;
- (d) Fire Prevention and Firefighting. Section A-VI/1-2 of the Code
- (e) Occupational Health and Safety. Section A-VI/1-4 of the Code

**Examination:**

Must have passed a written and an oral examination in appropriate operational knowledge conducted by an approved Examiner.

**SAFETY CERTIFICATE**

Minimum Age: 16 years

Prerequisite Certificate: None

Required Sea Service: None

**Course of Study:**

Must have satisfactorily completed an appropriate course of study that at least meets the standards specified in Section A-VI/1 of the Code for a seafarer's basic training.

**Must hold the following current Certificates:**

- (a) Valid certificate of medical fitness for service in the deck department
- (b) Survival techniques. Section A-VI/1-1 of the Code;
- (c) Basic First Aid at Sea. Section A-VI/1-3 of the Code;
- (d) Fire Prevention and Firefighting. Section A-VI/1-2 of the Code;
- (e) Occupational Health and Safety. Section A-VI/1-4 of the Code

**BOAT MASTER'S LICENCE**

Minimum Age: 16 years

Prerequisite Certificate: Basic Sea Safety Certificate

**Required Sea Service:**

6 months approved sea service whilst holding a Basic Sea Safety Certificate

**Course of Study:**

Must have satisfactorily completed an appropriate course of study that at least meets the standards specified in the approved Administration module Courses.

**Must hold the following current Certificates:**

- (a) Valid certificate of medical fitness for service in the deck department
- (b) Basic Sea Safety Certificate

**FISHING CERTIFICATES****MASTER CLASS 3 (F)**

Minimum Age: Not prescribed

Prerequisite Certificate: Master Class 4 (F)

**Required Sea Service**

12 months approved seagoing service as a watchkeeping officer whilst holding a Certificate of Competency - not lower than a Master Class 4 (F).

Not less than 6 months of seagoing service must be performed on vessels in excess of 25 metres length.

Remission of seagoing service may be allowed for attendance at approved training courses.

This service may be performed either in or out of the Near-Coastal Waters.

**Course of Study:**

Must have satisfactorily completed an appropriate course of study that at least meets the standards specified in Section A-II/3 of the Code for master on vessels engaged on Near-coastal voyages or fishing vessels operating in Near-coastal waters.

**Must hold the following current Certificates:**

- (a) Valid certificate of medical fitness for service in the deck department;
- (b) Certificate of proficiency in survival craft and rescue boats other than fast rescue boats. Section A-VI/2 of the Code;
- (c) First Aid at Sea. Section A-VI/4-1 of the Code;
- (d) Advanced Fire Fighting and Control. Section A-VI/3 of the Code;
- (e) Occupational Health and Safety. Section A-VI/1-4 of the Code;

**Examination:**

Must have passed a written practical and an oral examination in appropriate operational knowledge conducted by an Examiner.

**MASTER CLASS 4 (F)**

Minimum Age: 20 years

Prerequisite Certificate: Master Class 5 (F)

**Required Sea Service:**

12 months approved seagoing service as a watchkeeping officer holding a Certificate of Competency - no lower than a Master Class 5 (F).

Remission of seagoing service may be allowed for attendance at approved training courses.

This service may be performed either in or out of Near-coastal waters.

**Courses of Study:**

Must have satisfactorily completed an appropriate course of study that at least meets the standards specified in Section A-II/3 of the Code for masters on vessel engaged in Near-coastal voyages or fishing vessels operating in Near-Coastal waters.

**Must hold the following current Certificates:**

- (a) Valid certificate of medical fitness for service in the deck department;
- (b) Certificate of proficiency in survival craft and rescue boats other than fast rescue boats. Section A-VII of the Code;
- (c) First Aid at Sea. Section A-VI/4-1 of the Code
- (d) Advanced First Fighting and Control. Section A-VI/3 of the Code;
- (e) Occupational Health and Safety. Section A-VII/1-4 of the Code;

**Examination:**

Must have passed a written, practical and an oral examination in appropriate operational knowledge conducted by an Examiner.

**MASTER CLASS 5 (F)**

Minimum Age: 18 years

Prerequisite Certificate: Safety Certificate

Required Sea Service:

Either:

- (a) 30 months approved seagoing service whilst holding a Certificate of Competency not lower than a Safety Certificate; or
- (b) 18 months approved seagoing service whilst holding a Certificate of Competency not lower than Master/Engineer Class 6; or
- (c) 18 months approved seagoing service whilst holding a Certificate of Competency not lower than Pacific Island Qualified Fishing Deckhand.

Remission of seagoing service may be allowed for attendance at approved training courses.

This service may be performed either in or out of the Near-Coastal Waters.

**Course of Study:**

Must have satisfactorily completed an appropriate course of study that at least meets the standards specified in Section A-II/3 of the Code for officers in charge of a navigational watch on fishing vessel engaged on Near-Coastal voyages.

Master hold the following current Certificates:

- (a) Valid certificate of medical fitness for service in the deck department;
- (b) Certificate of proficiency in survival craft and rescue boats other than fast rescue boats. Section A-VI/2 of the Code;
- (c) First Aid at Sea Section A-VI/4-1 of the Code;
- (d) Advanced Fire Fighting and Control. Section A-VI/3 of the Code;
- (e) Occupational Health and Safety. Section A-VI/1-4 of the Code;

**Examination:**

Must have passed a written, practical and oral examination in appropriate operational knowledge conducted by an Examiner.

**MASTER/ENGINEER CLASS 6 (F)**

Minimum Age: 18 years

Prerequisite Certificate: Safety Certificate

---

Required Sea Service:

12 months approved sea service

---

**Course of Study:**

Must have satisfactorily completed an appropriate course of study that at least meets the standards specified in the approved module course.

**Must hold the following current Certificates:**

- (a) Valid certificate of medical fitness for service in the deck department
- (b) Survival techniques. Section A-VII-1 of the Code;
- (c) Basic First Aid at Sea. Section A-VI/1-3 of the Code;
- (d) Fire Prevention and Fire Fighting. Section A-VI/1-2 of the Code,
- (e) Occupational Health and Safety. Section A-VI/1-4 of the Code

**Examination:**

Must have passed a written, practical and an oral examination in appropriate operational knowledge conducted by an approved Examiner.

**RESTRICTED MASTER/ENGINEER CLASS 6 (F)**

Minimum Age: 18 years

Prerequisite Certificate: Basic Sea Safety Certificate

**Require Sea Service:**

6 months approved sea service whilst holding a Basic Sea Safety Certificate

**Course of Study:**

Must have satisfactorily completed an appropriate course of study that at least meets the standards specified in the approved module Courses.

**Must hold the following current Certificates:**

- (a) Valid certificate of medical fitness for service in the deck department
- (b) Basic Sea Safety Certificate;

**Examination:**

Must have passed a written/practical and an oral examination in appropriate operational knowledge conducted by an approved Examiner.

**SOLOMON ISLANDS QUALIFIED FISHING DECKHAND [SIQFD]**

Minimum Age: 16 years

Prerequisite Certificate: Safety Certificate

**Required Sea Service:**

12 months approved sea service

The Director may allow remission of seagoing service of six months for attendance at an approved training programme.

Must hold the following current Certificates:

- (a) Valid certificate of medical fitness for service in the deck department
- (b) Basic Sea Safety Certificate;

**SAFETY CERTIFICATE**

Minimum Age: 16 years

Prerequisite Certificate: None

Required Sea Service: None

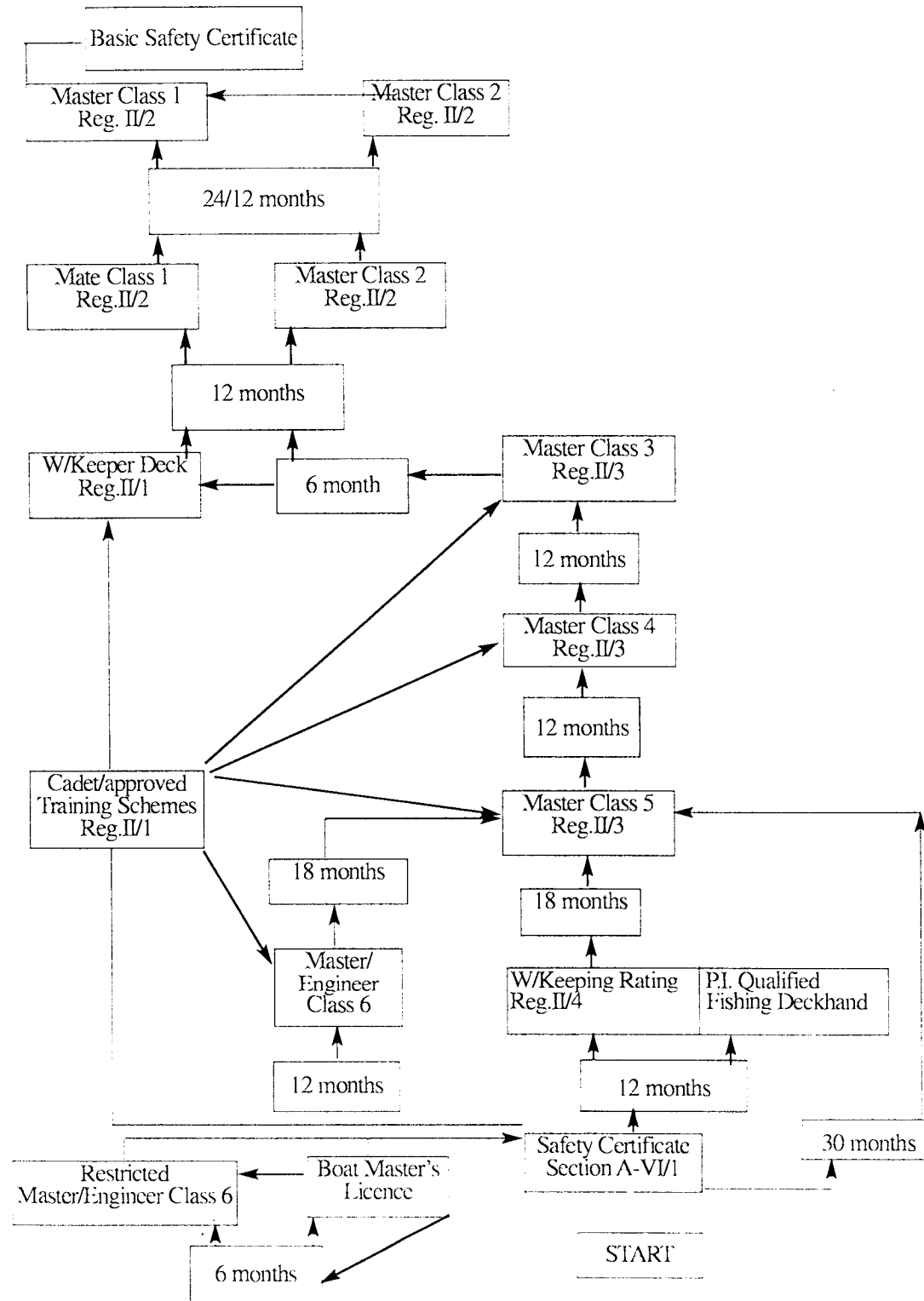
**Course of Study:**

Must have satisfactorily completed an appropriate course of study that at least meets the standards specified in Section A-VI/I of the Code for a seafarer's basic safety training.

**Must hold the following current Certificates:**

- (a) Valid certificate of medical fitness for service in the deck; department Survival techniques. Section A-VI/I-1 of the Code;
  - (b) Basic First Aid at Sea. Section A-VI/I-3 of the Code;
  - (c) Fire Prevention and Firefighting. Section A-VI/I-2 of the Code;
  - (b) Occupational Health and Safety. Section A-VI/I-4 of the Code;
-

FLOW DIAGRAM-DECK OFFICER CERTIFICATE STRUCTURE



**ENGINEER CLASS 1**

Minimum Age: Not prescribed

**Prerequisite Certificate:** Second Engineer Class 1 or Engineer Class 2 and meets the requirements for certification as an Officer in Charge of an engineering watch.

**Required Sea Service:**

Either:

- (a) 36 months approved seagoing service of which not less than 12 months must have been served on ships powered by main engine propulsion machinery of 3,000 kW propulsion power or more as an Engineer Officer in a position of responsibility whilst holding a certificate of competency as Second Engineer Class 1; or
- (b) 12 months approval seagoing service on ships powered by main engine propulsion machinery of 3,000 kW propulsion power or more as an Engineer Officer in a position of responsibility whilst holding a certificate of competency as a Engineer Class 2.

**Course of Study:**

Must have satisfactorily completed an appropriate course of study that at least meets the standards specified in Table A-III/2 of the Code and includes management training and knowledge of the International Safety Management Code.

**Must hold the following current Certificates:**

- (a) Valid certificate of medical fitness for service in the engine department;
- (b) certificate of proficiency in survival craft and rescue boats other than fast rescue boats. Section A-VI/2 of the Code;
- (c) First Aid at Sea. Section A-VI/4-1 of the Code;
- (d) Advanced Fire Fighting and Control. Section A-VI/3 of the Code;
- (e) Occupational Health and Safety. Section A-VI/1-4 of the Code;



**Examination:**

Must have passed an oral examination in appropriate operational knowledge conduct by an approved Examiner.

**SECOND ENGINEER CLASS 1**

Minimum Age: Not prescribed

Prerequisite Certificate: Engineer Watchkeeper

**Required Sea Service:**

Must have completed at least 12 months approved seagoing service on ships powered by main engine propulsion machinery between 750 kW to 3,000 kW propulsion power as Assistant Engineer Officer or Engineer Officer whilst holding a certificate of competency as Engineer Watchkeeper.

**Course of Study:**

Must have satisfactorily completed an appropriate course of study that at least meets the standards specified in Table A-III/2 of the Code and includes management training and knowledge of the International Safety Management Code.

**Must hold the following current Certificates:**

- (a) Valid certificate of medical fitness for service in the engine department;
- (b) Certificate of proficiency in survival craft and rescue boats other than fast rescue boats. Section A-VI/2 of the Code;
- (c) First Aid at Sea. Section A-VI/4-1 of the Code;
- (d) Advanced Fire Fighting and Control. Section A-VI/3 of the Code;
- (e) Occupational Health and Safety. Section A-VI/1-4 of the Code;

**Examination:**

Must have passed a written, practical and an oral examination in appropriate operational knowledge conducted by an approved Examiner.

**ENGINEER CLASS 2**

Minimum Age: Not prescribed

Prerequisite Certificate: Second Engineer Class 2, and meet the requirements for certification as an Officer in Charge of an engineering watch.

**Required Sea Service:**

Must have completed at least 24 months approved seagoing service of which not less than 12 months must have been served on ships powered by main engine propulsion machinery between 750kW to 3,000 kW propulsion power whilst holding a certificate of competency as Second Engineer Class 2.

Every engineer who is qualified to serve as a second engineer on ships powered by main engine propulsion machinery of 3,000 kW propulsion power or more, may serve as Chief engineer on ships powered by main engine propulsion machinery of less than 3,000 kW propulsion power, provided that not less than 12 months approved seagoing service has been served as an Engineer Officer in a position of responsibility and the certificate is so endorsed.

**Course of Study:**

Must have satisfactorily completed an appropriate course of study that at least meets the standards specified in Table A-III/3 of the Code and includes management training and knowledge of the International Safety Management Code.

Must hold the following current Certificates:

- (a) Valid certificate of medical fitness for service in the engine department;
- (b) Certificate of proficiency in survival craft and rescue boats other than fast rescue boats. Section A-VI/2 of the Code;
- (c) First Aid at Sea. Section A-VI/4-1 of the Code;
- (d) Advanced Fire Fighting and Control. Section A-VI/3 of the Code;
- (e) Occupational Health and Safety. Section A-VI/1-4 of the Code;

---

**Examination**

Must have passed an oral examination in appropriate operational knowledge conducted by an approval Examiner.

---

**SECOND ENGINEER CLASS 2**

Minimum Age: Not prescribed

Prerequisite Certificate: Engineering Watchkeeper

Required Sea Service:

Must have completed at least 12 months approved seagoing service on ships powered by main engine propulsion machinery of between 750 kW to 3,000 kW propulsion power whilst holding a certificate of competency as Engineering Watchkeeper.

**Course of Study:**

Must have satisfactorily completed an appropriate course of study that at least meets the standards specified in Table A-III/3 of the Code and includes management training and knowledge of the International Safety Management Code.

**Must hold the following current Certificates:**

- (a) Valid certificate of medical fitness for service in the engine department;
- (b) Certificate of proficiency in survival craft and rescue boats other than fast rescue boats. Section A-VI/2 of the Code;
- (c) First Aid at Sea. Section A-VI/4-1 of the Code;
- (d) Advanced Fire Fighting and Control. Section A-VI/3 of the Code;
- (e) Occupational Health and Safety. Section A-VI/1-4 of the Code;

**Examination:**

Must have passed a written, practical and an oral examination in appropriate operational knowledge conducted by an approval Examiner.

**ENGINEER WATCHKEEPER**

[Note: an Engineer Class 3 may gain cross credit to a Engineer Watchkeeper]

Minimum Age: 18 years

---

Prerequisite Certificate: Not prescribed

Required Sea Service:

Must have completed:

- (a) not less than 6 months seagoing service in the engine department in accordance with section A-III/1 of the Code; and
- (b) approved education and training of at least 30 months, which includes on-board training documented in an approved training record book and meet the standards of competence specified in Section A-III/1 of the Code.

**Course of Study:**

Must have satisfactorily completed an appropriate course of study that at least meets the standards specified in Table A-III/1 of the Code.

**Must hold the following current Certificates:**

- (a) Valid certificate of Medical fitness for service in the engine department;
- (b) Certificate of proficiency in survival craft and rescue boats other than fast rescue boats. Section A-VI/2 of the Code;
- (c) First Aid at Sea. Section A-VI/4-1 of the Code;
- (d) Advanced Fire Fighting and Control. Section A-VI/3 of the Code;
- (e) Occupational Health and Safety. Section A-VI/1-4 of the Code;

**Examination:**

Must have passed a written, practical and an oral examination in appropriate operational knowledge conducted by an approved Examiner.

**ENGINEER CLASS 3**

[Note: an Engineer Class 3 may gain cross-credit to Engineer Watchkeeper but must have completed at least 6 months approved seagoing service on ships powered by main engine propulsion machinery of above 750 kW propulsion power]

---

Minimum Age: 18 years  
Prerequisite Certificate: Engineer Class 4

Required Sea Service:

Either:

- (a) Not less than 12 months approved seagoing service as an Engineer Watchkeeper whilst holding a Certificate of Competency as a Engineer Class 4; or
- (b) Have completed approved education and training of at least 36 months which includes 6 months onboard training (on vessels more than 500 kW propulsion power machinery) which include on-board training documented in an approved training record book..

**Course of Study:**

Must have satisfactorily completed an appropriate course of study that at least meets the standards specified in the Secretariat of the Pacific Community Course modules and South Pacific Maritime Code.

**Must hold the following current Certificates:**

- (a) Valid certificate of medical fitness for service in the engine department;
- (b) Certificate of proficiency in survival craft and rescue boats other than fast rescue boats. Section A-VI/2 of the Code;
- (c) First Aid at Sea. Section A-VI/4-1 of the Code;
- (d) Advanced Fire Fighting and Control. Section A-VI/3 of the Code;
- (e) Occupational Health and Safety. Section A-VI/1-4 of the Code;

**Examination:**

Must have passed a written, practical and an oral examination in appropriate operational knowledge conducted by an approval Examiner.

**ENGINEER CLASS 4**

Minimum Age: 18 years

Prerequisite Certificate: Safety Certificate

Required Sea Service:

Either:

- (a) Not less than 12 months approved service as a watchkeeping engineer whilst holding Certificate of Competency as a Engineer Class 5; or
- (b) Not less than 12 months at sea as a watchkeeping engineer on completion of 3 years workshop service acceptable to the Director, or
- (c) Have completed approved education and training of at least 36 months which includes 6 months onboard training (on vessels more the 250 kW propulsion power machinery) which include on-board training documented in an approved training record book.

**Course of Study:**

Must have satisfactorily completed an appropriate course of study that at least meets the standards specified in the approved Course modules and South Pacific Maritime Code.

**Must hold the following current Certificates:**

- (a) Valid certificate of medical fitness for service in the engine department;
- (b) Certificate of proficiency in survival craft and rescue boats other than fast rescue boats. Section A-1/2 of the Code;

---

- (c) First Aid at Sea. Section A-VI/4-1 of the Code;
- (d) Advanced Fire Fighting and Control. Section A-VI/3 of the Code;
- (e) Occupational Health and Safety. Section A-VI/1-4 of the Code;

**Examination:**

Must have passed a written, practical and an oral examination in appropriate operational knowledge conducted by an approved Examiner.

**ENGINEER CLASS 5**

Minimum Age: 18 years

Prerequisite Certificate: Safety Certificate

**Required Sea Service:**

Either:

- (a) not less than a 3 years programme of training approved by the Director; including not less than one year at sea in work associated with engine operation; or
  - (b) not less than 12 months at sea as engineer on completion of 3 years workshop service acceptable to the Director; or
  - (c) have completed approval education and training of at least 24 months which includes 6 months onboard training (on vessels more than 250 kW propulsion power machinery) which include on-board training documented in an approval training record book; or
  - (d) not less than 12 months approved seagoing service whilst holding a Certificate of Competency as Master/Engineer Class 6/Eng. And completed not less than one year of approval workshop training; or
  - (e) Not less than 12 months approved seagoing service whilst holding a Certificate of Competency as Watchkeeping Rating and completed not less than one year of approved workshop training.
-

**Course of Study:**

Must have satisfactorily completed an appropriate course of study that at least meets the standards specified in the Secretariat of the Pacific Community Course modules and South Pacific Maritime Code.

**Must hold the following current Certificates:**

- (a) Valid certificate of medical fitness for service in the engine in the engine department;
- (b) Certificate of proficiency in survival craft and rescue boats other than fast rescue boats. Section A-VI/4-1 of the Code;
- (c) First Aid at Sea. Section A-VI/4-1 of the Code;
- (d) Fire Prevention and Control. Section A-VI/1-4 of the Code.

**Examination:**

Must have passed a written, practical and an oral examination in appropriate operational knowledge conducted by an approved Examiner.

**MASTER/ENGINEER CLASS 6**

Minimum Age: 18 years

Prerequisite Certificate: Safety Certificate

**Required Sea Service:**

Note less than 12 months approved seagoing service whilst holding a Safety Certificate.

**Course of Study:**

Must have satisfactorily completed an appropriate course of study that at least meets the standards specified in the Secretariat of the Pacific Community Course modules.

---



Must hold the following current Certificates:

- (a) Valid certificate of medical fitness for service in the deck or engine department;
- (b) Survival techniques Section A-VI/1 of the Code;
- (c) First Aid at Sea. Section A-VI/1-4 of the Code;
- (d) Fire Prevention and Control. Section A-VI/1-2 of the Code
- (e) Occupational Health and Safety. Section A-VI/1-4 of the Code;

**Examination:**

Must have passed a written, practical and an oral examination in appropriate operational knowledge conducted by an approved Examiner.

**RESTRICTED MASTER/ENGINEER CLASS 6**

Minimum Age: 18 years

Prerequisite Certificate: Basic Sea Safety Certificate

Required Sea Service:

6 months approved sea service whilst holding a Basic Sea Safety Certificate

**Course of Study:**

Must have satisfactorily completed an appropriate course of study that at least meets the standards specified in the STCW 95 Regulation Course modules.

Must hold the following current Certificates:

- (a) Valid certificate of medical fitness for service in the deck department
- (b) Basic Sea Safety Certificate;

**Examination:**

Must have passed a written/practical and an oral examination in appropriate operational

**ENGINE WATCHKEEPING RATING**

Minimum Age: 16 years

Prerequisite Certificate: Safety Certificate

Required Sea Service:

12 months approved seagoing service.

Remission of seagoing service of six months may be allowed by the Director for attendance at approval training programmes.

**Course of Study:**

Must have satisfactorily completed an appropriate course of study that at least meets the standards specified in Section A-III/4 of the Code for rating forming part of a navigational watch.

**Must hold the following current Certificates:**

- (a) Valid certificate of medical fitness for service in the engine department;
- (b) Survival techniques Section A-VI/1-1 of the Code; Basic First Aid at Sea. Section A-VI/1-3 of the Code;
- (c) Fire Prevention and Firefighting. Section A-VI/1-2 of the Code;
- (d) Occupational Health and Safety. Section A-VI/1-4 of the Code;

**Examination:**

Must have passed a written/practical and an oral examination in appropriate operational knowledge conducted by an Examiner.

---

**SAFETY CERTIFICATE**

Minimum Age: 16 years

Prerequisite Certificate: None

Required Sea Service: None

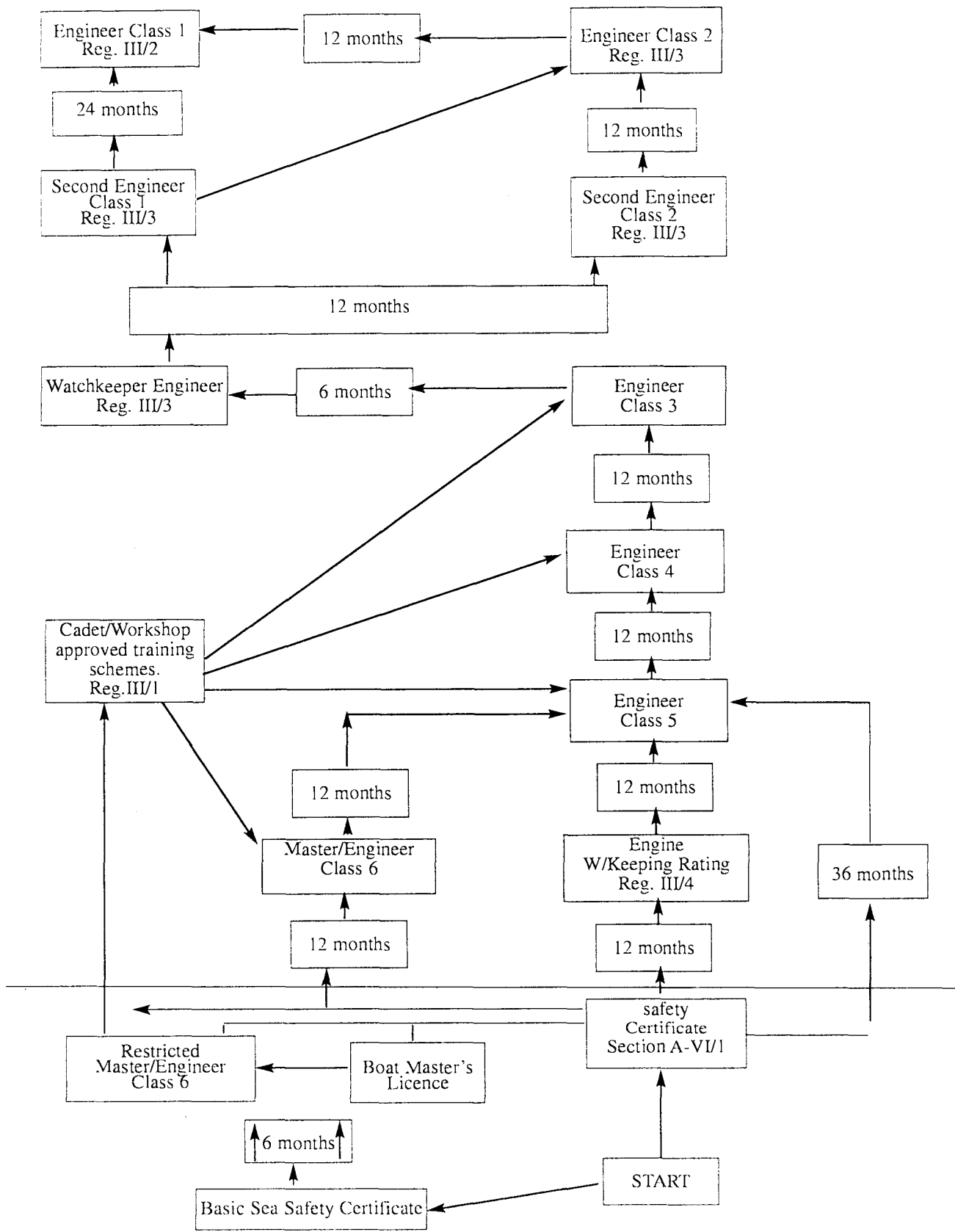
**Course of Study:**

Must have satisfactorily completed an appropriate course of study that at least meets the standards specified in Section A-VI/1 of the Code for a seafarers basic safety training.

**Must hold the following current Certificates:**

- (a) Valid certificate of medical fitness for service in the engine department
- (b) Survival techniques - Section A-VI/1-1 of the Code;
- (c) Basic First Aid at Sea. Section A-VI/1-3 of the Code;
- (d) Fire Prevention and Firefighting. Section A-VI/1-2 of the Code
- (e) Occupational Health and Safety. Section A-VI/1-4 of the Code

FLOW DIAGRAM-ENGINEERING CERTIFICATE STRUCTURE



**SPECIAL TRAINING REQUIREMENTS CERTIFICATES****BASIC SAFETY TRAINING (SAFETY CERTIFICATE)**

Minimum Age: 16 years

Prerequisite Certificate: None

Required Sea Service: None

**Course of Study:**

All Seafares must receive familiarization and basic safety training or instruction in accordance with Section A-VI/1 of the Code and must meet the appropriate standard of competence specified therein.

**PROFICIENCY IN SURVIVAL CRAFT AND RESCUE BOATS OTHER THAN FAST RESCUE BOATS**

Minimum Age: Not prescribed

Prerequisite Certificate: None

Required Sea Service:

Approved seagoing service of not less than 12 months or have attended an approved training course and have an approved seagoing service of not less than 6 months; and must provide evidence of having achieved the required standard of competence defined in section A-VI/2 of the Code.

**MEDICAL FIRST-AID (FIRST AID AT SEA)**

Minimum Age: Not prescribed

Prerequisite Certificate: None

Required Sea Service: None

Every person designed to provide medical first aid on board a vessel must provide evidence of having achieved the required standards of competence in medical first aid on board vessels specified in Section A-VI/4, paragraphs 1-3 of the Code.

**MEDICAL CARE (SHIPMASTER'S MEDICAL)**

Minimum Age: Not prescribed

Prerequisite Certificate: Medical First Aid

Required Sea Service: None

Seafares designated to take charge of medical care on board ship must meet the standard of competence in medical care on board ships specified in Section A-VI/4, paragraph 4-6 of the Code.

**ADVANCED FIRE FIGHTING**

Minimum Age: Not prescribed

Prerequisite Certificate: None

Required Sea Service: None

Every candidate for certification must provide evidence of having achieved the required standard of competence defined in section A-VI/3 of the Code.

---

**TANKER FAMILIARISATION**

Minimum Age: Not prescribed

Prerequisite Certificate: None

Required Sea Service:

At least 3 months of approved seagoing service on tankers in order to acquire adequate knowledge of safe operational practices; or an approved tanker familiarization course covering at least the syllabus given for that course in Section A-V/1 of the Code, so however that, the Director may accept a period of supervised seagoing service shorter than that prescribed above, provided that:

- (a) the period so accepted is not less than 1 month;
- (b) the tanker is of less than 3000 gross tonnage;
- (c) the duration of each voyage on which the tanker is engaged during the period does not exceed 72 hours; and
- (d) the operational characteristics of the tanker and the number of voyages and loading and discharging operations completed during the period, allow the same level of knowledge and experience to be acquired.

**ADVANCED TANKER SAFETY**

Minimum Age: Not prescribed

Prerequisite Certificate: Tanker Familiarisation

Required Sea Service:

Must have:

- (a) experience appropriate to their duties on the type of tanker on which they serve; and
- (b) completed an approved specialized training programme which at least covers the subjects set out in Section A-V/1 of the Code that are appropriate to their duties on the oil tanker on which they serve.

**RO-RO PASSENGER VESSELS**

Minimum Age: Not prescribed

Prerequisite Certificate: None

Required Sea Service: None

Master, officers, ratings and other persons serving on board ro-ro passenger vessels must provide evidence of having achieved the required standards of competence defined in Section A-V/2 of the Code.

**RESTRICTED OPERATORS CERTIFICATE (ROC)**

Minimum Age: 18 years

Prerequisite Certificate: None

Required Sea Service: None

Radio personnel on ships not required to comply with the provisions of the GMDSS in Chapter 14 of the SOLAS Convention must comply with the provisions of the Radio Regulations. Appropriate certificates prescribed by the Radio Regulations must be issued or recognized in respect of such radio personnel.

**GENERAL OPERATORS CERTIFICATE (GMDSS) - GOC**

Minimum Age: 18 years

Prerequisite Certificate: None

Required Sea Service; None

Must have completed approved education and training and meet the standard of competence specified in Section A-IV/2 of the Code.

---



**PART 2 - COURSE STRUCTURE**

## DECK DEPARTMENT

Master & Chief Mate Class 1  
Master & Chief Mate Class 2  
Deck Watchkeeper (STCW 95)  
Master Class 3  
Master Class 4  
Master Class 5  
Master/Engineer Class 6  
Restricted Master/Engineer Class 6  
Deck Watchkeeping Rating  
Pacific Islands Qualified Fishing Deck Hand

## ENGINE DEPARTMENT

Chief & Second Engineer Class 1  
Chief & Second Engineer Class 2  
Engineer Watchkeeper (STCW 95)  
Engineer Class 3  
Engineer Class 4  
Engineer Class 5  
Master/Engineer Class 6  
Restricted Master/Engineer Class 6  
Engine Watchkeeping Rating

## SPECIAL TRAINING COURSES

Basic Sea Safety Certificate (Non-STCW)  
Safety Certificate (Basic Safety Training - STCW 95)  
Tanker (Petroleum/Chemical/Gas)  
Ro-Ro Passenger Vessels

**DECK DEPARTMENT****DECK WATCHKEEPER (STCW 95)**

Prerequisite Certificate: Not prescribed

Code	Module	Nominal Duration in hours
SPC 101	Electronic Navigation Aids	90
SPC 102	Electronic Navigation-Radar (Part of SPC 101)	
SPC 103	Electronic Navigation-ARPA (Part of SPC 101)	
SPC 104	Offshore and Celestial navigation	70
SPC 105	Visual Communications (Deck Watchkeeper)	10
SPC 106	Enabling Maths and Physics	35
SPC 107	Enabling Computers (Deck Watchkeeper)	21

(Plus prerequisite special training courses)

**MASTER CLASS 3**

Prerequisite Certificate: Master Class 4

Code	Module	Nominal Duration in hours
SPC 081	Vessel Construction & Machinery (Master 3)	35
SPC 082	Vessel Stability & Stress	35
SPC 083	Bridge Operations	35
SPC 084	Nautical Knowledge (Master 3)	35
SPC 085	Cargo Operations (Master 3)	35
SPC 086	Vessel Administration	30
SPC 037	ARPA (optional)	21

(Plus prerequisite special training courses)

**MASTER CLASS 4**

Prerequisite Certificate: Master Class 5

Code	Module	Nominal Duration in hours
SPC 061	Vessel Construction & Machinery (Master 4)	35
SPC 062	Small Vessel Stability	35
<del>SPC 063</del>	<del>Navigational &amp; Position Determination (Master 4)</del>	<del>35</del>
SPC 064	Instrument & Navigational Aids	35
SPC 065	Radar (Master 4)	35
SPC 066	Nautical Knowledge (Master 4)	50
SPC 067	Visual Communications	7
SPC 068	Cargo Operations (Master 4)	21
SPC 037	ARPA (optional)	21

(Plus prerequisite special training courses)

**MASTER CLASS 5**

Prerequisite Certificate: Safety Certificate

Code	Module	Nominal Duration in hours
SPC 041	Vessel Construction & Machinery	35
SPC 042	Navigational & Position Determination (Master 5)	60
SPC 043	Nautical Knowledge (Master 5)	60
SPC 044	Small Vessel Stability (Master 5)	35
SPC 034	Basic Radar	35
SPC 035	Advanced Fire Prevention & Control	35
SPC 036	GMDSS	40
SPC 037	ARPA (optional)	21
SPC 015	Proficiency in survival craft and rescue boats other than fast rescue boats	35
SPC 016	First Aid at Sea	21

(Plus prerequisite special training courses)

**MASTER/ENGINEER CLASS 6**

Prerequisite Certificate: Safety Certificate

Code	Module	Nominal Duration in hours
SPC 201	Nautical Knowledge (Master 6)	60
SPC 022	Engineering Knowledge (Engineer 6)	60
SPC 023	Basic Radar Operation (Optional)	21
SPC 024	Radiotelephony	21

**RESTRICTED MASTER/ENGINEER CLASS 6**

Prerequisite Certificate: Basic Sea Safety Certificate

Code	Module	Nominal Duration in hours
SPC 020A	Basic Sea Safety	21
SPC 021B	Nautical Knowledge (Restricted Class 6)	60
SPC 022C	Outboard Motors (Restricted Class 6)	10
SPC 022D	Diesel Engineering (Restricted Class 6)	30

**BOAT MASTER'S LICENCE**

Prerequisite Certificate: Basic Sea Safety Certificate

Code	Module	Nominal Duration in hours
-	Basic Sea Safety	20
-	Nautical Knowledge (Boat Master)	10
-	Outboard Motors (Boat Master)	4
-	Diesel Engineering (Boat Master)	6

**DECK WATCHKEEPING RATING**

Prerequisite Certificate: Safety Certificate

Code	Module	Nominal Duration in hours
SPC 011	Basic Bridge Procedures	50
SPC 012	Basic Seamanship	35
SPC 014	Enabling English	7
SPC 015	Proficiency in survival craft and rescue boats other Than fast rescue boats	21

(Plus prerequisite special training courses)

**PACIFIC ISLANDS QUALIFIED FISHING DECKHAND**

Prerequisite Certificate: Safety Certificate

Code	Module	Nominal Duration in hours
SPC 011	Basic Bridge Procedures	50
SPC 012	Basic Seamanship	35
SPC 014	Enabling English	7
SPC 015	Proficiency in survival craft and rescue boats other than fast rescue boats	35
SPC 016	First Aid at Sea	21
SPC 012 F	Basic Fishing	30

(Plus prerequisite special training courses)

---

**ENGINEER DEPARTMENT****ENGINEER WATCHKEEPER (STCW 95)**

Prerequisite Certificate: Not prescribed

Code	Module	Nominal Duration in hours
SPC 111	Electronics	35
SPC 112	Marine Control	35
SPC 113	General Engineering Knowledge	50
SPC 114	Motor Engineering Knowledge	50
SPC 115	Steam Engineering Knowledge	40

(Plus prerequisite special training courses)

**ENGINEER CLASS 3**

Prerequisite Certificate: Engineer Class 4

Code	Module	Nominal Duration in hours
SPC 091	Applied Mechanics (Engineer 3)	35
SPC 092	Heat and Heat Engines (Engineer 3)	35
SPC 093	Engineering Drawings (Engineer 3)	35
SPC 094	Electro Technology (Engineer 3)	35
SPC 095	Naval Architecture and Ship Construction (Engineer 3)	35
SPC 096	Engineering Knowledge - General (Engineer 3)	35
SPC 086	Administration	35

(Plus Prerequisite special training courses)

**ENGINEER CLASS 4**

Prerequisite Certificate: Engineer Class 5

Code	Module	Nominal Duration in hours
SPC 071	Applied Mechanics (Engineer 4)	35
SPC 072	Heat and Heat Engines (Engineer 4)	35
SPC 073	Engineering Drawings (Engineer 4)	35
SPC 074	Electro Technology (Engineer 4)	35
SPC 075	Naval Architecture and Ship Construction (Engineer 4)	35
SPC 076	Engineer Knowledge - General (Engineer 4)	60
SPC 077	Engineering Knowledge-Motor (Engineer 4)	60
SPC 035	Advanced Fire Prevention & Control	35

(Plus prerequisite special training courses)

**ENGINEER CLASS 5**

Prerequisite Certificate: Master/Engineer Class 6 or Engine Watchkeeping Rating

Code	Module	Nominal Duration in hours
SPC 051	Practical Mathematics	35
SPC 052	Engineering Knowledge (Engineer 5)	60
SPC 015	Proficiency in survival craft and rescue boats other than fast rescue boats	35
SPC 016	First Aid at Sea	21

(Plus prerequisite special training courses)

**MASTER/ENGINEER CLASS 6**

Prerequisite Certificate: Safety Certificate

Code	Module	Nominal Duration in hours
SPC 021	Nautical Knowledge (Master 6)	60
SPC 022	Engineering Knowledge (Engineer 6)	60
SPC 023	Basic Radar Operation	21
SPC 024	Radiotelephony	21

**RESTRICTED MASTER/ENGINEER CLASS 6**

Prerequisite Certificate: Basic Sea Safety Certificate

Code	Module	Nominal Duration in hours
-	Basic Sea Safety	21
SPC 021B	Nautical Knowledge (Restricted Class 6)	60
SPC 022C	Outboard Motors (Restricted Class 6)	10
SPC 022D	Diesel Engineering (Restricted Class 6)	30

**ENGINE WATCHKEEPING RATING**

Prerequisite Certificate: Safety Certificate

Code	Module	Nominal Duration in hours
SPC 013	Basic Marine Machinery System	50
SPC 012	Basic Seamanship	35
SPC 014	Enabling English	7
SPC 015	Proficiency in survival craft and rescue boats other than fast rescue boats	35
SPC 016	First Aid at Sea	21

(Plus prerequisite special training courses)

**SAFETY CERTIFICATE**

Prerequisite Certificate: Not Prescribed

Code	Module	Nominal Duration in hours
SPC 001	Survival Techniques	15
SPC 002	Fire Prevention and Control	18
SPC 003	Elementary First Aid	15
SPC 004	Occupational Health & Safety	20

**BOAT MASTER'S LICENCE**

Prerequisite Certificate: Basic Sea Safety Certificate

Code	Module	Nominal Duration in hours
-	Basic Sea Safety	20
-	Fire Prevention and Control	18
-	Elementary First Aid	15
-	Occupational Health & Safety	20

**PREREQUISITE SPECIAL TRAINING REQUIREMENT COURSES**

Prerequisite Certificate: Not Prescribed

Code	Module	Nominal Duration in hours
SPC 005	Basic Tanker Safety Training (not yet available)	21
SPC 006	Ro-Ro passenger vessels (not yet available)	28
SPC 012F	Basic Fishing	30

**SCHEDULE 6**

(Regulations 18(5), (6) and 20(1))

**PART 1 - CERTIFICATES RECOGNISED IN SOLOMON ISLANDS**

The Director may issue, recognise and endorse the following classes of certificates of competency:

**NAVIGATION****Unlimited**

Master Class 1	>3000 gross tons
Mate Class 1	>3000 gross tons
Master Class 2	<3000 gross tons
Mate Class 2	<3000 gross tons
Officer in Charge of a Navigational Watch	>500 gross tons
Deck Watchkeeping Rating	>500 gross tons

**Near-coastal**

Master Class 1	>3000 gross tons
Mate Class 1	>3000 gross tons
Master Class 2	3000 to >1600 gross tons
Mate Class 2	3000 to >1600 gross tons
Officer in Charge of a Navigational Watch	>500 gross tons
Master Class 3	1600 to >500 gross tons
Master Class 4	500 to >80 gross tons
Master Class 5	80 to >20 gross tons
Deck Watchkeeping Rating	>500 gross tons

**Territorial waters**

Master Class 1	>3000 gross tons
Mate Class 1	>3000 gross tons
Master Class 2	3000 to >1600 gross tons
Master Class 2	3000 to >1600 gross tons
Officer in Charge of a Navigational Watch	>500 to gross tons
<del>Master Class 3</del>	<del>1600 to &gt;500 gross tons</del>
Master Class 4	500 to >80 gross tons
Master/Engineer Class 6-Engineer	20 gross tons (15 metres) or less
Deck Watchkeeping Rating	>500 gross tons



**Inshore**

Master Class 1	>3000 gross tons
Mate Class 1	>3000 gross tons
Master Class 2	3000 to >1600 gross tons
Mate Class 2	3000 to >1600 gross tons
Officer in Charge of a Navigational Watch	>500 gross tons
Master Class 3	1600 to >500 gross tons
Master Class 4	500 to >80 gross tons
Master Class 5	80 to >20 gross tons
Restricted Master/Engineer Class 6-Engineer 20	gross tons (15 metres) or less
Deck Watchkeeping Rating	>500 gross tons

**Sheltered Waters**

Boat Master's Licence	20 gross tons (15 metres) or less
-----------------------	-----------------------------------

**ENGINEERING****Unlimited**

Engineer Class 1	>3000 kW
Second Engineer Class 1	>3000 kW
Engineer Class 2	3000 to >750 kW
Second Engineer Class 2	3000 to >750 kW
Officer in Charge of an engineering watch	>750 kW
Engine Watchkeeping Rating	>750 kW
Engine Class 3*(Endorsed)	<750 kW

**Near-coastal**

Engineer Class 1	>3000 kW
Second Engineer Class 1	>3000 kW
Engineer Class 2	3000 to >1500 kW
Second Engineer Class 2	3000 to >1500 kW
Officer in Charge of an engineering watch	>750 kW
Engineer Class 3	1500 – >750 kW
Engineer Class 4	500 – >250 kW
Engineer Class 5	250 kW or less
Engineer Watchkeeping Rating	>750 kW

**Territorial waters**

Engineer Class 1	>3000 kW
Second Engineer Class 1	>3000 kW
Engineer Class 2	3000 to >150 kW
Second Engineer Class 2	3000 to >150 kW
Officer in Charge of an engineering watch	>750 kW
Engineer Class 3	<1500 – 500 kW
Engineer Class 4	<750 – 250 kW
Engineer Class 5	<250 kW
Master/Engineer Class 6	20 gross tons (15 metres) or less
Engine Watchkeeping Rating	>750 kW

**Inshore**

Engineer Class 1	>3000 kW
Second Engineer Class 1	>3000 kW
Engineer Class 2	>3000 kW
Second Engineer Class 2	>3000 kW
Officer in Charge of an engineering watch	>750 kW
Engineer Class 3	<3000 – 750 kW
Engineer Class 4	<750 – 500 kW
Engineer Class 5	<500 – 250 kW
Master/Engineer Class 6	<250 kW
Restricted Master/Engineer Class 6	20 gross tons (15 metres) or less
Engineer Watchkeeping Rating	>750 kW

**PART 2 - MANDATORY SHORT COURSES**

The School of Marine and Fisheries Studies may issue the following short course certificates:

<b>Short Courses</b>	<b>STCW Code</b>
a) Basic Safety - Survival Techniques Certificate	A-VI/1-1
b) Basic Safety - Occupational Health and Safety Certificate	A-VI/1-4
c) Basic Sea Safety	-
d) Proficiency in Survival Craft and Rescue Boats other than fast rescue boats	A-VI/2-1

The School of Nursing (or other body approved by the Director) may issue the following short course certificates:

- |  |          |
|--|----------|
| a) Basic Safety - Elementary First Aid Certificate | Λ-VI/1-3 |
| b) Proficiency in Medical First Aid Certificate    | Λ-VI/4-1 |
| c) Medical care on board ship                      | Λ-VI/4-2 |

The School of Marine and Fisheries Studies (or other body approved by the Director as having the necessary expertise in fire prevention and response) may issue the following short course certificates:

- |   |          |
|---|----------|
| a) Basic Safety - Fire Prevention and Fire fighting Certificate | Λ-VI/1-2 |
| b) Basic Safety - Survival Techniques Certificate               | Λ-VI/1-1 |
| c) Advanced Fire Prevention and Control Certificate             | Λ-VI/3   |

The School of Marine and Fisheries Studies (or other body approved by the Director as having the necessary expertise in telecommunications) may issue the following short course certificates:

- |   |        |
|---|--------|
| a) General Operator's Certificate (GMDSS - GOC) | Λ-IV/2 |
| b) Restricted Operator's Certificate (ROC)      | Λ-IV/2 |

### **PART 3 - SPECIAL TRAINING REQUIREMENT COURSES**

The School of Marine and Fisheries Studies in conjunction with an approved Training Provider may issue the following short course certificates:

- |  |  |
|--|--|
| a) Crowd Management [Ro-Ro & Passenger Ships]  |  |
| b) Crisis Management [Ro-Ro & Passenger Ships] |  |
| c) Oil Tanker Safety Course                    |  |
| d) Liquefied Gas Tanker Safety Course          |  |

## SCHEDULE 7

(Regulations 27, 34 and 61)

## LIST OF BASE FEES

Item	SSID
1. Application for the issue of a certificate, including the verification of sea-time.	S 140
2. Conduct of an assessment of competency or examination conducted by or on behalf of the Administration:	
Master Class 1 or Engineer Class 1	S500
Mate Class 1 or Second Engineer Class 1	S450
Master Class 2 or Engineer Class 2	S400
Mate Class 2 or Second Engineer Class 2	S350
Master Class 3 or Deck Watchkeeper	S300
Engineer Class 3 or Engineer Watchkeeper	S250
Master Class 4 or Engineer Watchkeeper	S200
Master/Engineer Class 6 [Full & Restricted]	S150
Deck Watchkeeping Rating or Engine Watchkeeping Rating	S100
Pacific Island Qualified Fishing Deckhand	S100
Boat Master's Licence	S100
3. Additional Certificate Transcript of examination results	S50
4. Re-assessment of an unsuccessful candidate	S50 per module
5. Issuance of a new Certificate of Competency	
Master Class 1 or Engineer Class 1	S200
Mate Class 1 or Second Engineer Class 1	S200
Master Class 2 or Engineer Class 2	S150
Mate Class 2 or Second Engineer Class 2	S150
Engineer Class 3 or Deck Watchkeeper	S100
Master Class 4 or Engineer Watchkeeper	S100
Master Class 5 or Engineer Class 4	S100
Master/Engineer Class 6 [Full & Restricted]	S50
Deck Watchkeeping Rating or Engine Watchkeeping Rating	S50
<del>Pacific Island Qualified Fishing Deckhand</del>	<del>S50</del>
Safety Certificate	S50
Boat Master's Licence	S50

6.	Revalidation of a Certificate of Competency			
	Master Class 1	or	Engineer Class 1	S200
	Mate Class 1	or	Second Engineer Class 1	S200
	Master Class 2	or	Engineer Class 2	S200
	Mate Class 2	or	Second Engineer Class 2	S150
	Master Class 3	or	Deck Watchkeeper	S100
	Engineer Class 3	or	Engineer Watchkeeper	S100
	Master Class 4	or	Engineer Class 4	S100
	Master Class 5	or	Engineer Class 5	S100
	Master/Engineer Class 6 [Full & Restricted]			S50
	Pacific Island Qualified Fishing Deckhand			S50
	Boat Master's Licence			S50
7.	Replacement of a lost certificate			S250
8.	Application Fee for Dispensation from Manning Requirements			S250
9.	Certificate of Competency Endorsement fee			S50
10.	Endorsement attesting the Recognition of a Certificate of Competency			S500
	Endorsement attesting the issue of a Certificate of Competency			S500
11.	Issuance of a Safe Manning Certificate			S250
12.	Course Syllabus			S250
13.	Onboard Training Record Book			S50
14.	Application for a review by a Medical Board			S100

**SCHEDULE 8**

(Regulation 37)

**PART 1 - MEDICAL STANDARDS**

1. A physician conducting a medical examination under Part VII must ensure that the seafarer does not suffer from –
  - (a) an impairment that causes unpredictable loss of consciousness and that cannot be controlled through medication;
  - (b) a disorder that could prevent the seafarer from reacting efficiently, while on watch, or in an emergency;
  - (c) a condition that is likely to require emergency medical care and that cannot be controlled through medication;
  - (d) high blood pressure, or high risk of stroke or heart attack;
  - (e) a condition that could endanger others, taking into account the confined living conditions on board ship, such as –
    - (i) AIDS or other sexually transmitted disease;
    - (ii) a communicable disease that could affect other seafarers coming into close contact;
  - (f) alcohol or drug addiction that could impair the seafarers ability to carry out his or her duties as and when required;
  - (g) an active psychiatric disorder
  - (h) The donor should order a blood test if he suspects the seafarer has been in contact with a HIV positive person.
2. The physician must ensure that the seafarer has –

---

  - (a) adequate muscle strength to carry a mass of 22 kg;
  - (b) the physical capacity to wear breathing apparatus and life saving equipment;
  - (c) adequate vision and hearing and the agility and strength to perform the duties of fire fighting, first-aid administration and ship abandonment in an emergency.

---

3. The physician must ensure that a seafarer who performs the following duties meets the physical requirements set out in "Seagoing Occupation" of the *Physician's Guide to STCW-95*-
  - (a) the duties of deck department personnel set out in clause 1.2;
  - (b) the duties of engineers set out in clause 3;
  - (c) the duties of cooks or stewards set out in clause 1.4
4. A medical examination conducted under Part VII must conform to the guidelines and time-period requirements of the following clauses of Physicians Guide.
5. Colour vision standards are those set out in Sections 3.1 and 3.2 or the Physician's Guide.
6. Subject to the provisions contained in the *Physicians Guide*, every seafarer before going to sea must –
  - (a) be in good health with normal blood pressure, or be on maintenance medication to maintain the blood pressure not to exceed 160/100;
  - (b) have vision of 20/20 or equivalent international vision criteria, correctable to 20/40 for deck applicants and 20/50 for engineer applicants;
  - (c) have an unaided average threshold of hearing of 70 dB or less in each ear for deck applicants, or functional speech discrimination of at least 90% at 55 dB binaural.
7. Deck applicants may have aided average of 40db or less or functional speech discrimination of 90% at 55 dB binaural. Waivers may be granted in exceptional conditions for applicants who do not meet these criteria.

**PART 2 - TABLE D-1/9**  
**MINIMUM IN-SERVICE EYESIGHT STANDARDS**

STCW Regulation	Category	Distance vision*		Near/ immediate Vision	Colour vision	Visual fields	Night blindness	Diploma (double vision)
		One eye	Other eye					
I/1 II/1 II/2 II/3 II/4	Masters, deck officers and ratings required to undertake look-out duties Aided: Unaided:	0.5# 0.1	0.5 0.1	Both eyes together Aided or unaided	Vision required for ships' navigational (e.g. chart and nautical publication reference use of bridge instrumentation and equipment, and identification of aids to navigation)	Normal visual fields	Vision required to perform all necessary functions in darkness without compromise	No significant condition evident
I/1 III/1 III/2 III/3 III/4	All engineer officers and ratings part of an engine-room watch Aided: Unaided:	0.4 0.1	0.4 0.1	Vision required to read instruments in close proximity, to operate equipment, and to identify systems/components as necessary	Vision required to read instruments in close proximity, to operate equipment, and to identify systems/components as necessary	Sufficient visual fields	Vision required to perform all necessary functions in darkness without compromise	No significant condition evident
I/1 IV/2	Radio Officers and Electrical Officers Aided: Unaided:	0.4 0.1	0.4 0.1	Vision required to read instruments in close proximity, to operate equipment, and to identify systems/components as necessary	Vision required to read instruments in close proximity, to operate equipment, and to identify systems/components as necessary	Sufficient visual fields	Vision required to perform all necessary functions in darkness without compromise	No significant condition evident

\*Note: Values given in Snellen decimal notation.

#Note: A value of at least 0.7 in one eye is recommended to reduce the risk of undetected underlying eye disease.



## SCHEDULE 9

(Regulations 38(2) and 60)

## STANDARD FORMS

*Note: These forms are not prescribed and represent standard forms to be used for the purposes of these Regulations. They may be altered from time to time by the Director in the exercise of his powers under section 11(1) of the Maritime Safety Administration Act 2009.*

**Form No. 1 - SEAFARERS MEDICAL FITNESS EXAMINATION**

To be completed by the applicant

Surname:	First Name:	Male Female
Present Occupation:	Rank/Grading:	
Date/Place of Birth:	Company/Employer:	

*Home/Contact Address: (street/town/country include phone contact)*

**1. Family History**

- (a) Has anyone in your close family or household been treated for tuberculosis (TB) in the past ten years? Yes/No
- (b) Do you have a family history of heart disease, arthritis, rheumatism or diabetes? Yes/No
- (c) Has anyone in your family ever been treated for mental illness or 'nervous' conditions? Yes/No

*(For physicians use only)*

Please provide further information if the answer to any of the above questions is yes

.....

.....

.....

**2. Personal History****Have you ever suffered from:**

- (a) tuberculosis, spitting of blood or severe chest infection? Yes/No
- (b) conditions of the heart or lungs, including breathlessness, palpitation and high blood pressure? Yes/No
- (c) infection of the bladder, kidneys or urinary tract, including sexually transmitted infection? Yes/No

d) any condition of the stomach, liver or bowels including hepatitis or stomach ulcer?	Yes/No	<input type="checkbox"/>
(e) convulsions, fits, epilepsy or severe migraine headaches?	Yes/No	<input type="checkbox"/>
(f) skin complaints, including skin repetitive effects from it? - still taking medication?	Yes/No	<input type="checkbox"/>
(g) malaria or leprosy - still suffer repetitive effects from it? - still taking medication?	Yes/No Yes/No	<input type="checkbox"/> <input type="checkbox"/>
(h) diabetes, rheumatism, arthritis, hernia, stroke or cancer?	Yes/No	<input type="checkbox"/>
(i) any major accidents or recent (in past ten years) surgical treatment?	Yes/No	<input type="checkbox"/>

**3. General**

(a) Do you wear glasses or corrective (contact) lenses?	Yes/No	<input type="checkbox"/>
(b) If you, do you wear glasses for: ( <i>circle one</i> ) ..... reading ..... all the time		
(c) When did you last have a chest X-ray _____ (year)		
(d) When did you last consult your doctor for an illness? _____ (month and year)		

**EXAMINATIONS FOR MEDICAL PRACTITIONER'S REPORT**

**1. Physical Examination**

<b>Candidate's general appearance: (comment on visible signs of ill health and/or disability)</b>	
.....	
.....	
.....	
Height .....	Weight .....
.....	
Blood Pressure _____ / _____ .....	Pulse rate _____
.....	
Urinalysis .....	
.....	
a) Is there any evidence of heart and/or lung disease?	Yes/No <input type="checkbox"/>
b) Is a chest S Ray required? ( <i>consider history as well as examination results</i> )	Yes/No <input type="checkbox"/>

c) Is there any evidence of past or recent ear, nose and/or throat infections?	Yes/No	<input type="checkbox"/>
defect in sight or hearing? ( <i>surgery tests essential</i> )	Yes/No	<input type="checkbox"/>
enlarged glands, various veins, shin lesions	Yes/No	<input type="checkbox"/>
disease of the brain, spinal cord or nervous system	Yes/No	<input type="checkbox"/>
d) Does the applicant take any regular medication?	Yes/No	<input type="checkbox"/>
Name of medication and reason for taking?		
.....		
.....		
.....		
Other		
comments .....		
.....		
.....		

## 2. Psychological Assessment

(a) Does the applicant drink alcohol?	Yes/No	<input type="checkbox"/>
(b) In your opinion, is the applicant a mild, moderate or heavy drinker?	Yes/No	<input type="checkbox"/>
(c) Does the patient have a history of, or is currently using drugs?	Yes/No	<input type="checkbox"/>
(d) Is the applicant aware of the possible health risks associated with the having unprotected sexual encounters whilst employed as a seafarer?	Yes/No	<input type="checkbox"/>
(e) Is the applicant aware of the protective effects of condoms against possible health risks?	Yes/No	<input type="checkbox"/>
(f) In your opinion, is the applicant a mature, responsible person who will manage employment as a seafarer?	Yes/No	<input type="checkbox"/>
Comments:.....		
.....		
.....		

**Medical Practitioner's Recommendation**

The examination doctor is requested to inform the candidate whether acceptance, deferment, or rejection is recommended. <i>(Delete where inapplicable)</i>	
Fit for contract service for ..... years	Fit for permanent service
Fit for - <ul style="list-style-type: none"> <li>• International sea service in the capacity listed <b>OR</b> any other capacity .....</li> <li>• Home-trade service in the capacity listed</li> </ul>	
Deferred for ..... months	Rejected

**Results of Chest X Ray**

<p>.....</p> <p>What further tests/investigations need to be undertaken for the candidate to be considered eligible?</p> <p>.....</p> <p>Other comments: .....</p> <p>.....</p>
---

**Signatures**

<p>Examining Practitioner .....</p> <p>Applicant:.....</p> <p>Date: .....</p> <p>Employment:</p> <p>Approved <input type="checkbox"/>      Note approved <input type="checkbox"/></p>
---

<p>Medical Practitioners</p> <p>Name:.....</p> <p>.....</p> <p>Address:.....</p> <p>.....</p> <p>Provider/Registration number:.....</p> <p>Telephone #:.....      Fax:.....</p>
---

**Form No.2 - SEAFARERS MEDICAL FITNESS CERTIFICATE**

This is to certify that .....

has been examined in accordance with the *Physician's Guide to STCW-95*, published by the Secretariat of the Pacific Community, the International Convention on Standards of Training, Certification and Watchkeeping for Seafarers, 1978, as amended in 1995 and the Shipping (STCW Convention) Regulations 2010 and has been found fit for seagoing service in:

Management / Operational / Support level for ..... years.

OR  
Has been found unfit for seagoing service. *(Delete where inapplicable)*

Other  
Comments:.....  
.....

Examining Practitioner's Name: .....

Address:.....

Medical Practitioner's Licence number:.....

Telephone:..... Fax:..... E-Mail:.....

Issued in:..... on.....

Certificate No:.....

Examining Practitioner's signature..... *(Stamp)*

Form NO. 3 - CERTIFICATE OF COMPETENCY  
SOLOMON ISLANDS MARITIME SAFETY ADMINISTRATION  
CERTIFICATE OF COMPETENCY



This is to certify that

.....  
has been found duly qualified to hold this Certificate of Competency as

.....  
and is entitled under the Solomon Islands Shipping Act, 1998 to serve in a ship  
in any capacity requiring the holding of a Certificate of that designation.

The Certificate of Competency is subject to any endorsements as to its period of  
validity, limitations, extensions or additional qualifications.

Certificate No.

.....  
*(Official Seal)*

Director, SIMSA.....

Date of Issue / /

Form NO.4 - CERTIFICATE OF COMPETENCY (STCW ENDORSEMENT)



SOLOMON ISLANDS

CERTIFICATE ISSUED UNDER THE PROVISIONS OF THE  
INTERNATIONAL CONVENTION ON STANDARDS OF TRAINING,  
CERTIFICATION AND WATCHKEEPING FOR SEAFARERS, 1978,  
AS AMENDED IN 1995

This is to certify that

Name:.....

has been found uly qualified in accordance with the provisions of Shipping (STCW Convention) Regulations 2010, implementing the above Convention (as amended), and has been found competent to serve in the following capacity or capacities specified in the applicable Safe Manning requirements of the Administration subject to any limitations indicated, until

Date of Expiry:.....

unless otherwise cancelled, suspended, revalidated or until the date of expiry of any extension of the validity of this certificate as is shown overleaf:

CAPACITY	LIMITATIONS APPLYING (IF ANY)

The lawful holder of this certificate may perform the following functions, at the levels specified subject to my limitations indicated:

FUNCTION	LEVEL	LIMITATIONS (IF ANY)
1 2 3 4 5 6 7		
1 2 3 4 5 6 7		
1 2 3 4 5 6 7		
1 2 3 4 5 6 7		

Signature of the holder

Certificate No. \_\_\_\_\_

Issued in Honiara on: \_\_\_\_\_

Director - SIMSA

Photograph  
of the  
holder  
of the  
certificate



Name:

ENDORSEMENT

[Empty rectangular box for endorsement]

REVALIDATION

The validity of this certificate is hereby extended until.....  
*(Official Seal)*

\_\_\_\_\_  
 Director, SIMSA

Date of revalidation \_\_\_\_\_ Name of duly authorized official \_\_\_\_\_

The validation of this certificate is hereby extended  
 until .....  
*(Official Seal)*

\_\_\_\_\_  
 Director, SIMSA

Date of revalidation \_\_\_\_\_ Name of duly authorized official \_\_\_\_\_

FUNCTIONS

*(as specified on STCW 95 Certificates)*

- 1 Navigation
- 2 Cargo Handling and Stowage
- 3 Controlling the Operation of the Ship and care for Persons on Board
- 4 Marine Engineering
- 5 Maintenance and Repair
- 6 Radio communications

DETAIL OF HOLDER OF CERTIFICATE

Name of Holder: \_\_\_\_\_

Date & Place of Examination: \_\_\_\_\_

Date & Place of Birth: \_\_\_\_\_

Height (cm): \_\_\_\_\_

Other Identifying Features: \_\_\_\_\_



**Form NO.5 - APPLICATION FOR CERTIFICATE OF COMPETENCY OR RECOGNITION**

*Tick appropriate box (Use BLOCK LETTERS)*

Certificate of Competency	<input type="checkbox"/>	Endorsement of a Marine Certificate	<input type="checkbox"/>	Replacement Certificate	<input type="checkbox"/>
Certificate of Recognition	<input type="checkbox"/>	Renewal of a Marine Certificate	<input type="checkbox"/>	Seatime Assessment	<input type="checkbox"/>
Class of Certificate for which This application applies			Seafarer Registration No. <i>(if known)</i> _____		

**Applicant's Details**

Family Name		Given name/s	
-------------	--	--------------	--

Postal Address	_____
----------------	-------

Residential Address <i>(if the same postal address write as above)</i>	_____
---	-------

Telephone		Date of Birth	Place of Birth <i>(Country)</i>	
-----------	--	---------------	------------------------------------	--

Height <i>(cm)</i>	Colour of Eyes		Colour of Hair		Gender	Male/Female
-----------------------	----------------	--	----------------	--	--------	-------------

**Particulars of Marine Certificates held**

No.	Class	Issuing Authority	Date of issue	Date of expiry	Endorsements	Ever Suspended or Cancelled <i>(State why)</i>

**Service Record Book Details *(Original Certificate to be sighted)***

Date Issue		Place Issue		Book No.	
------------	--	-------------	--	----------	--

**Details of Eyesight Test *(Original Certificate to be sighted)***

Date Issued		Place Tested		Results		Certificate No.
-------------	--	--------------	--	---------	--	-----------------

**Certificate of Medical Fitness *(Original Certificate to be sighted)***

Date Issue		Doctor		Telephone	
------------	--	--------	--	-----------	--

**Applicant's Declaration**

I ..... (name in BLOCK LETTERS), hereby declare that the particulars entered in this application are correct and true to the best of my knowledge and belief, and that all Certificates and Testimonials submitted with this application for verification of particular entries are true and genuine documents given and signed by the persons whose names appear on them. I understand that some or all of the information provided on this form may be disclosed to Government Authorities.

Applicant's Signature	Taken and declared before me at ..... This..... day of..... 200.....
Signature ( <i>Justice of the Peace/Commissioner of Oaths</i> )	Name ( <i>please</i> )

---



---



Abbreviations (to be used in Declaration table above)

	Area of Operation		Type		Principal Duties	
	UL	NC	C	Commercial Vessel	M	Master
TW	Near Coastal	FV	Fishing Vessel <th>CM</th> <th>Chief Mate</th>	CM	Chief Mate	
IS	Territorial Waters	RP	Recreational <th>2M</th> <th>Second Mate</th>	2M	Second Mate	
SW	Inshore	N	Naval <th>3M</th> <th>Third Mate</th>	3M	Third Mate	
PA	Sheltered Waters	R	Rescue <th>WKD</th> <th>Watchkeeper Deck</th>	WKD	Watchkeeper Deck	
	Pilotage Area	T	Tankers <th>DR</th> <th>Deck Rating</th>	DR	Deck Rating	
		PC	Pass/Cargo <th>IR</th> <th>Integrated Rating</th>	IR	Integrated Rating	
		P	Passenger <th>CI</th> <th>Chief Engineer</th>	CI	Chief Engineer	
		RP	RO-RO <th>2E</th> <th>Second Engineer</th>	2E	Second Engineer	
		IIS	High Speed Craft <th>3E</th> <th>Third Engineer</th>	3E	Third Engineer	
		CS	Cable <th>WKE</th> <th>Watchkeeper Engineer</th>	WKE	Watchkeeper Engineer	
		NA	Navalids <th>IER</th> <th>Watch Rating Engine</th>	IER	Watch Rating Engine	
		O	Others <th>P</th> <th>Pilot</th>	P	Pilot	
				O	Others (Please specify)	

Statement of Service Ashore (ENGINEERS)

No. of Testimonials	Name of business	Address of Business	Nature of work carried out by applicant	From (date)	To (date)	No of Days	Remarks

Course Details (including approval Training Institutions and associated specialist courses)

Course Title	Training Institution	Date of Issue

*Official Use Only*

Total Service: \_\_\_\_\_

Commercial: \_\_\_\_\_

Last 5 years: \_\_\_\_\_

>3000GT / kW \_\_\_\_\_

<3000GT / kW \_\_\_\_\_

<1600GT / 1500 kW \_\_\_\_\_

<500GT / 750 kW \_\_\_\_\_

<80GT / 500 kW \_\_\_\_\_

<20GT / 250 kW \_\_\_\_\_

**Seatime Approved: Y/N**

**Certificate:** \_\_\_\_\_

**Signature of authorizing officer:** \_\_\_\_\_

**Name:** \_\_\_\_\_

**Date/Stamp:**

\_\_\_\_\_

Form No. 6 - CERTIFICATE OF APPROVAL TO CONDUCT TRAINING



Ministry of Infrastructure Development  
Solomon Islands Maritime Safety Administration

Certificate Number: \_\_\_\_\_

CERTIFICATE OF APPROVAL TO  
CONDUCT TRAINING

I hereby certify that

.....  
(insert name of certificate holder)

Of -

.....  
(insert address of certificate holder)

is approved to conduct training programs leading to the issue of Solomon Islands  
maritime qualification in accordance with the Shipping Act 1998 and the  
Shipping (STCW Convention) Regulations 2010 - [Part 6]

Date this            day of            /            /20

(Signed)

Director - SIMSA

(stamp)

(This certificate is subject to the conditions and limitations attached).

The Certificate of Approval is issued subject to the following conditions.

1. All requirements for issue of this certificate are maintained.
2. Audits carried out by the Solomon Islands Maritime Safety Administration auditors in accordance with Part IX of the Merchant Shipping Act (STCW 95) Convention) Regulations 2000, shall be permitted by the holder of this Certificate.
3. The holder of this certificate will notify the Solomon Islands Maritime Safety Administration of any changes to the system of the quality control, training programs or any event that may effect the quality of the programme. These events may include –
  - Reduction of staff numbers or qualifications allocated to a programme;
  - Reduction of teaching contact or course hours for any module;
  - Loss of use of any equipment or facilities critical to the programme.

4. The following special conditions apply to this Certificate –

(a)

*Insert other conditions as required)*

The certificates are granted subject to the following limitations –

1. This certificate is valid for five (5) years from the date of issue.
2. This certificate is valid for the following programs.

Programs	Approval dates	
	From	To

*Insert the list of approval programs and the date to which each is approved)*

3. This certificate is subject to the following special limitations –

(a)

*(Insert other limitations as required)*

*(Signed)*

.....  
Director - SIMSA

Made at Honiara this..... day of ..... 20

Honiara, Solomon Islands  
Printed under the authority of the  
Solomon Islands Government

---

Printed by Solomon Islands Printers Limited.